

Datasheet for ABIN2786895
anti-POP5 antibody (Middle Region)



[Go to Product page](#)

2 Images

Overview

Quantity:	100 µL
Target:	POP5
Binding Specificity:	Middle Region
Reactivity:	Human, Rat, Horse, Mouse, Guinea Pig, Zebrafish (Danio rerio), Cow, Rabbit, Dog, Sheep
Host:	Rabbit
Clonality:	Polyclonal
Conjugate:	This POP5 antibody is un-conjugated
Application:	Western Blotting (WB)

Product Details

Immunogen:	The immunogen is a synthetic peptide directed towards the middle region of human POP5
Sequence:	IRTCQKFLIQ YNRRQLLILL QNCTDEGERE AIQKSVTRSC LLEEEEEESGE
Predicted Reactivity:	Cow: 100%, Dog: 92%, Guinea Pig: 100%, Horse: 100%, Human: 100%, Mouse: 100%, Rabbit: 100%, Rat: 100%, Sheep: 100%, Zebrafish: 83%
Characteristics:	This is a rabbit polyclonal antibody against POP5. It was validated on Western Blot.
Purification:	Affinity Purified

Target Details

Target:	POP5
Alternative Name:	POP5 (POP5 Products)

Target Details

Background: POP5 is a component of ribonuclease P, a protein complex that generates mature tRNA molecules by cleaving their 5'-ends. POP5 is also a component of RNase MRP.
Alias Symbols: HSPC004, RPP2, RPP20, hPop5
Protein Interaction Partner: TRAF1, REL, CAMK2B, KRT40, CEP44, CCDC102B, UBC, RPP14, RPP25, POP5, POP4, POP1,
Protein Size: 163

Molecular Weight: 19 kDa

Gene ID: 51367

NCBI Accession: [NM_015918](#), [NP_057002](#)

UniProt: [Q969H6](#)

Application Details

Application Notes: Optimal working dilutions should be determined experimentally by the investigator.

Comment: Antigen size: 163 AA

Restrictions: For Research Use only

Handling

Format: Liquid

Concentration: Lot specific

Buffer: Liquid. Purified antibody supplied in 1x PBS buffer with 0.09 % (w/v) sodium azide and 2 % sucrose.

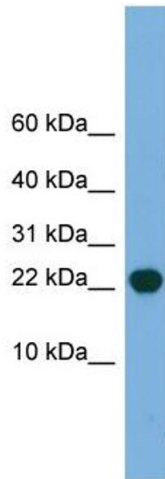
Preservative: Sodium azide

Precaution of Use: This product contains Sodium azide: a POISONOUS AND HAZARDOUS SUBSTANCE which should be handled by trained staff only.

Handling Advice: Avoid repeated freeze-thaw cycles.

Storage: -20 °C

Storage Comment: For short term use, store at 2-8°C up to 1 week. For long term storage, store at -20°C in small aliquots to prevent freeze-thaw cycles.

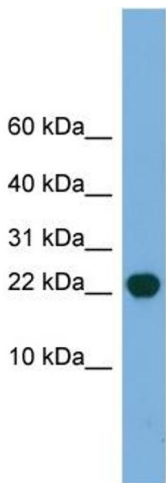


Western Blotting

Image 1. WB Suggested Anti-POP5 Antibody Titration:

0.2-1 ug/ml

Positive Control: Human Lung



Rabbit Anti-POP5 Antibody
Catalog Number: ARP56774
Lot Number: QC29062
Lane: Fetal Lung Lysate

Antibody Titration: 1.0µg/ml
Gel Concentration: 10-20%

Western Blotting

Image 2. WB Suggested Anti-POP5

Antibody Titration: 0.2-1 µg/mL

Positive Control: Human Lung