

Datasheet for ABIN2786896  
**anti-RPS27L antibody (N-Term)**[Go to Product page](#)

## 2 Images

## Overview

Quantity:	100 µL
Target:	RPS27L
Binding Specificity:	N-Term
Reactivity:	Human, Mouse, Rat, Guinea Pig, Rabbit, Dog, Horse, Saccharomyces cerevisiae, Cow, Goat
Host:	Rabbit
Clonality:	Polyclonal
Conjugate:	This RPS27L antibody is un-conjugated
Application:	Western Blotting (WB)

## Product Details

Immunogen:	The immunogen is a synthetic peptide directed towards the N terminal region of human RPS27L
Sequence:	MPLARDLLHP SLEEEKKKHK KKRLVQSPNS YFMDVKCPGC YKITTVFSHA
Predicted Reactivity:	Cow: 93%, Dog: 93%, Goat: 91%, Guinea Pig: 100%, Horse: 100%, Human: 100%, Mouse: 100%, Rabbit: 100%, Rat: 100%, Yeast: 79%
Characteristics:	This is a rabbit polyclonal antibody against RPS27L. It was validated on Western Blot using a cell lysate as a positive control.
Purification:	Affinity Purified

## Target Details

Target:	RPS27L
---------	--------

## Target Details

Alternative Name:	RPS27L ( <a href="#">RPS27L Products</a> )
Background:	<p>This gene encodes a protein sharing 96 % amino acid similarity with ribosomal protein S27, which suggests the encoded protein may be a component of the 40S ribosomal subunit.</p> <p>Alias Symbols: -</p> <p>Protein Interaction Partner: UBC, ASB4, RPS21, RPS15A, RPS13, RPS8, RPS7, RPL24, PA2G4, IARS, FAU, EIF2S1, WIBG, SYNCRIP, GNB2L1, G3BP1, RANBP9, RPS28, RPS27, RL1, MYC, RPLP0P6, RPL23, RPL14, SNRPD3, RPS25, RPS24, RPS23, RPS20, RPS16, RPS12, RPS11, RPS6, RPS4X, RPS3A, RPS3, RPS2, RPL</p> <p>Protein Size: 84</p>
Molecular Weight:	9 kDa
Gene ID:	51065
NCBI Accession:	<a href="#">NM_015907</a> , <a href="#">NP_057004</a>
UniProt:	<a href="#">Q71UM5</a>
Pathways:	<a href="#">Positive Regulation of Endopeptidase Activity</a>

## Application Details

Application Notes:	Optimal working dilutions should be determined experimentally by the investigator.
Comment:	Antigen size: 84 AA
Restrictions:	For Research Use only

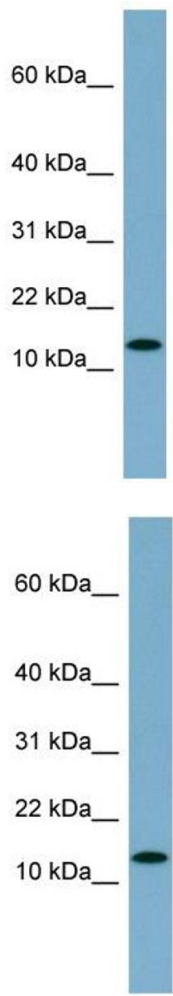
## Handling

Format:	Liquid
Concentration:	Lot specific
Buffer:	Liquid. Purified antibody supplied in 1x PBS buffer with 0.09 % (w/v) sodium azide and 2 % sucrose.
Preservative:	Sodium azide
Precaution of Use:	This product contains Sodium azide: a POISONOUS AND HAZARDOUS SUBSTANCE which should be handled by trained staff only.
Handling Advice:	Avoid repeated freeze-thaw cycles.
Storage:	-20 °C

Handling

Storage Comment: For short term use, store at 2-8°C up to 1 week. For long term storage, store at -20°C in small aliquots to prevent freeze-thaw cycles.

Images



Western Blotting

Image 1. WB Suggested Anti-RPS27L Antibody Titration:

0.2-1 ug/ml

ELISA Titer: 1:62500

Positive Control: MCF7 cell lysate

Western Blotting

Image 2. WB Suggested Anti-RPS27L

Antibody Titration: 0.2-1 µg/mL ELISA Titer: 1::2500

Positive Control: MCF7 cell lysate

RPS27L is supported by BioGPS gene expression data to be expressed in MCF7