

Datasheet for ABIN2786898
anti-TRMT6 antibody (Middle Region)[Go to Product page](#)

2 Images

Overview

| | |
|----------------------|---|
| Quantity: | 100 µL |
| Target: | TRMT6 |
| Binding Specificity: | Middle Region |
| Reactivity: | Human, Mouse, Cow, Horse, Rat, Dog, Pig, Rabbit, Guinea Pig |
| Host: | Rabbit |
| Clonality: | Polyclonal |
| Conjugate: | This TRMT6 antibody is un-conjugated |
| Application: | Western Blotting (WB) |

Product Details

| | |
|-----------------------|--|
| Immunogen: | The immunogen is a synthetic peptide directed towards the middle region of human TRMT6 |
| Sequence: | GAMMERMGGF GSIIQLYPGG GPVRAATACF GFPKSFLSGL YEFPLNKVDS |
| Predicted Reactivity: | Cow: 100%, Dog: 100%, Guinea Pig: 93%, Horse: 100%, Human: 100%, Mouse: 100%, Pig: 100%, Rabbit: 100%, Rat: 100% |
| Characteristics: | This is a rabbit polyclonal antibody against TRMT6. It was validated on Western Blot. |
| Purification: | Affinity Purified |

Target Details

| | |
|-------------------|--|
| Target: | TRMT6 |
| Alternative Name: | TRMT6 (TRMT6 Products) |

Target Details

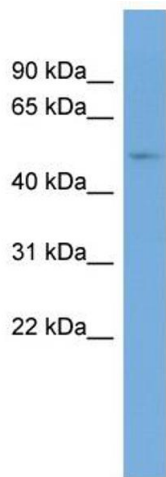
| | |
|-------------------|---|
| Background: | <p>The protein encoded by this gene is similar to an uncharacterized protein from <i>C. elegans</i>. Although the function of the encoded protein is unknown, it shares weak sequence similarity to a region of <i>S. cerevisiae</i> translation initiation factor subunit Gcd10p.</p> <p>Alias Symbols: CGI-09, GCD10, Gcd10p, MGC5029</p> <p>Protein Interaction Partner: UBC, OGFR, KIAA1598, HHEX, FOXJ1, TRMT61A, VPS35, ATP6V1B2, CAND1, CUL3,</p> <p>Protein Size: 497</p> |
| Molecular Weight: | 56 kDa |
| Gene ID: | 51605 |
| NCBI Accession: | NM_015939 , NP_057023 |
| UniProt: | Q9UJA5 |

Application Details

| | |
|--------------------|--|
| Application Notes: | Optimal working dilutions should be determined experimentally by the investigator. |
| Comment: | Antigen size: 497 AA |
| Restrictions: | For Research Use only |

Handling

| | |
|--------------------|---|
| Format: | Liquid |
| Concentration: | Lot specific |
| Buffer: | Liquid. Purified antibody supplied in 1x PBS buffer with 0.09 % (w/v) sodium azide and 2 % sucrose. |
| Preservative: | Sodium azide |
| Precaution of Use: | This product contains Sodium azide: a POISONOUS AND HAZARDOUS SUBSTANCE which should be handled by trained staff only. |
| Handling Advice: | Avoid repeated freeze-thaw cycles. |
| Storage: | -20 °C |
| Storage Comment: | For short term use, store at 2-8°C up to 1 week. For long term storage, store at -20°C in small aliquots to prevent freeze-thaw cycles. |



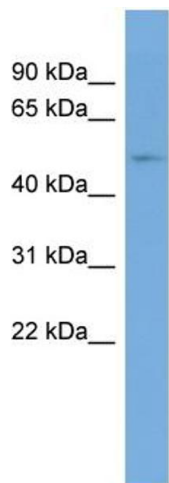
Western Blotting

Image 1. WB Suggested Anti-TRMT6 Antibody Titration:

0.2-1 ug/ml

ELISA Titer: 1:62500

Positive Control: PANC1 cell lysate



Rabbit Anti-TRMT6 Antibody
Catalog Number: ARP56780
Lot Number: QC27824
Lane: PANC1 Cell Lysate

Antibody Titration: 1.0µg/ml
Gel Concentration: 12%

Western Blotting

Image 2. WB Suggested Anti-TRMT6

Antibody Titration: 0.2-1 µg/mL ELISA Titer: 1::2500

Positive Control: PANC1 cell lysate