

Datasheet for ABIN2786899  
**anti-ASCC1 antibody (C-Term)**

## 2 Images

[Go to Product page](#)

## Overview

Quantity:	100 µL
Target:	ASCC1
Binding Specificity:	C-Term
Reactivity:	Human, Mouse, Rat, Cow, Dog, Goat, Horse, Rabbit, Pig, Guinea Pig
Host:	Rabbit
Clonality:	Polyclonal
Conjugate:	This ASCC1 antibody is un-conjugated
Application:	Western Blotting (WB)

## Product Details

Immunogen:	The immunogen is a synthetic peptide corresponding to a region of Rat
Sequence:	QSMGLVMKEW TSVKLHATVM NTLLRKDPNA EGRYNLYTAD GKYIFKERES
Predicted Reactivity:	Cow: 100%, Dog: 100%, Goat: 86%, Guinea Pig: 93%, Horse: 100%, Human: 100%, Mouse: 100%, Pig: 100%, Rabbit: 93%, Rat: 100%
Characteristics:	This is a rabbit polyclonal antibody against Ascc1. It was validated on Western Blot.
Purification:	Affinity Purified

## Target Details

Target:	ASCC1
Alternative Name:	Ascc1 ( <a href="#">ASCC1 Products</a> )

## Target Details

Background: The function of Ascc1 remains unknown.  
Alias Symbols: Asc-1, CGI-18, MGC94577, Ascc1  
Protein Size: 356

Molecular Weight: 41 kDa

Gene ID: 294512

NCBI Accession: [NM\\_001007632](#), [NP\\_001007633](#)

## Application Details

Application Notes: Optimal working dilutions should be determined experimentally by the investigator.

Comment: Antigen size: 356 AA

Restrictions: For Research Use only

## Handling

Format: Liquid

Concentration: Lot specific

Buffer: Liquid. Purified antibody supplied in 1x PBS buffer with 0.09 % (w/v) sodium azide and 2 % sucrose.

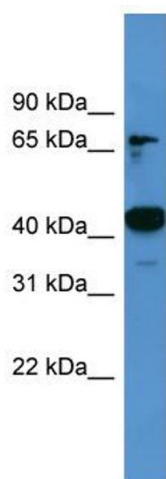
Preservative: Sodium azide

Precaution of Use: This product contains Sodium azide: a POISONOUS AND HAZARDOUS SUBSTANCE which should be handled by trained staff only.

Handling Advice: Avoid repeated freeze-thaw cycles.

Storage: -20 °C

Storage Comment: For short term use, store at 2-8°C up to 1 week. For long term storage, store at -20°C in small aliquots to prevent freeze-thaw cycles.

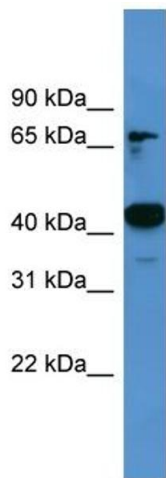


**Western Blotting**

**Image 1. WB Suggested Anti-Ascc1 Antibody Titration:**  
0.2-1 ug/ml

**ELISA Titer:** 1:1562500

**Positive Control:** Rat Muscle



Rabbit Anti-Ascc1 Antibody  
Catalog Number: ARP56782  
Lot Number: QC27826  
Lane: Rat Muscle Lysate

Antibody Titration: 1.0µg/ml  
Gel Concentration: 12%

**Western Blotting**

**Image 2.** WB Suggested Anti-Ascc1  
Antibody Titration: 0.2-1 µg/mL ELISA Titer: 1:1562500  
Positive Control: Rat Muscle