

Datasheet for ABIN2786903
anti-MEMO1 antibody (Middle Region)[Go to Product page](#)

1 Image

Overview

Quantity:	100 µL
Target:	MEMO1
Binding Specificity:	Middle Region
Reactivity:	Human, Mouse, Rat, Cow, Rabbit, Horse, Dog, Guinea Pig, Zebrafish (Danio rerio)
Host:	Rabbit
Clonality:	Polyclonal
Conjugate:	This MEMO1 antibody is un-conjugated
Application:	Western Blotting (WB)

Product Details

Immunogen:	The immunogen is a synthetic peptide directed towards the middle region of human MEMO1
Sequence:	AMESHKDEFT IIPVLVGALS ESKEQEFGKL FSKYLADPSN LFVVSSDFCH
Predicted Reactivity:	Cow: 100%, Dog: 100%, Guinea Pig: 100%, Horse: 100%, Human: 100%, Mouse: 100%, Rabbit: 100%, Rat: 100%, Zebrafish: 86%
Characteristics:	This is a rabbit polyclonal antibody against MEMO1. It was validated on Western Blot using a cell lysate as a positive control.
Purification:	Affinity Purified

Target Details

Target:	MEMO1
---------	-------

Target Details

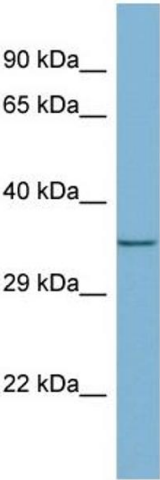
Alternative Name:	MEMO1 (MEMO1 Products)
Background:	<p>MEMO1 may control cell migration by relaying extracellular chemotactic signals to the microtubule cytoskeleton. MEMO1 is the mediator of ERBB2 signaling. MEMO1 is required for breast carcinoma cell migration.</p> <p>Alias Symbols: C2orf4, CGI-27, DKFZp434I0135, FLJ25031, MEMO, NS5ATP7</p> <p>Protein Interaction Partner: RBM45, LNX1, LZTS2, TRIP6, TCF4, TACC1, TRIM27, REL, SUMO2, NEDD8, UBC, ITGA4, DISC1,</p> <p>Protein Size: 297</p>
Molecular Weight:	34 kDa
Gene ID:	51072
NCBI Accession:	NM_015934 , NP_057039
UniProt:	Q9Y316

Application Details

Application Notes:	Optimal working dilutions should be determined experimentally by the investigator.
Comment:	Antigen size: 297 AA
Restrictions:	For Research Use only

Handling

Format:	Liquid
Concentration:	Lot specific
Buffer:	Liquid. Purified antibody supplied in 1x PBS buffer with 0.09 % (w/v) sodium azide and 2 % sucrose.
Preservative:	Sodium azide
Precaution of Use:	This product contains Sodium azide: a POISONOUS AND HAZARDOUS SUBSTANCE which should be handled by trained staff only.
Handling Advice:	Avoid repeated freeze-thaw cycles.
Storage:	-20 °C
Storage Comment:	For short term use, store at 2-8°C up to 1 week. For long term storage, store at -20°C in small aliquots to prevent freeze-thaw cycles.



Western Blotting

Image 1. WB Suggested Anti-MEMO1 Antibody Titration:

0.2-1 ug/ml

ELISA Titer: 1:1562500

Positive Control: Human heart