



[Go to Product page](#)

Datasheet for ABIN2786913

anti-LACTB2 antibody (Middle Region)

1 Image

1 Publication

Overview

Quantity:	100 µL
Target:	LACTB2
Binding Specificity:	Middle Region
Reactivity:	Human, Mouse, Rat, Dog, Pig, Rabbit, Cow, Saccharomyces cerevisiae, Guinea Pig, Zebrafish (Danio rerio), Horse
Host:	Rabbit
Clonality:	Polyclonal
Conjugate:	This LACTB2 antibody is un-conjugated
Application:	Western Blotting (WB)

Product Details

Immunogen:	The immunogen is a synthetic peptide directed towards the middle region of human LACTB2
Sequence:	NPQREEIIGN GEQQYVYLKD GDVIKTEGAT LRVLYTPGHT DDHMALLEE
Predicted Reactivity:	Cow: 93%, Dog: 86%, Guinea Pig: 93%, Horse: 93%, Human: 100%, Mouse: 100%, Pig: 100%, Rabbit: 93%, Rat: 100%, Yeast: 85%, Zebrafish: 93%
Characteristics:	This is a rabbit polyclonal antibody against LACTB2. It was validated on Western Blot using a cell lysate as a positive control.
Purification:	Affinity Purified

Target Details

Target:	LACTB2
---------	--------

Target Details

Alternative Name:	LACTB2 (LACTB2 Products)
Background:	The specific function of LACTB2 is not yet known. Alias Symbols: CGI-83 Protein Interaction Partner: SIAH1, NEDD8, NAGK, PALM2, NDRG3, SMEK2, SSU72, NUP210, TXNL1, COIL, UBE2H, SMS, UBC, Protein Size: 288
Molecular Weight:	33 kDa
Gene ID:	51110
NCBI Accession:	NM_016027 , NP_057111
UniProt:	Q53H82

Application Details

Application Notes:	Optimal working dilutions should be determined experimentally by the investigator.
Comment:	Antigen size: 288 AA
Restrictions:	For Research Use only

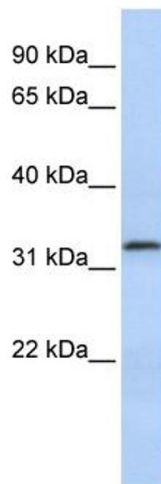
Handling

Format:	Liquid
Concentration:	Lot specific
Buffer:	Liquid. Purified antibody supplied in 1x PBS buffer with 0.09 % (w/v) sodium azide and 2 % sucrose.
Preservative:	Sodium azide
Precaution of Use:	This product contains Sodium azide: a POISONOUS AND HAZARDOUS SUBSTANCE which should be handled by trained staff only.
Handling Advice:	Avoid repeated freeze-thaw cycles.
Storage:	-20 °C
Storage Comment:	For short term use, store at 2-8°C up to 1 week. For long term storage, store at -20°C in small aliquots to prevent freeze-thaw cycles.

Publications

Product cited in: Lazrek, Goffard, Schanen, Karquel, Bocket, Lion, Devaux, Hedouin, Gosset, Hober: "Detection of hepatitis C virus antibodies and RNA among medicolegal autopsy cases in Northern France." in: **Diagnostic microbiology and infectious disease**, Vol. 55, Issue 1, pp. 55-8, (2006) ([PubMed](#)).

Images



Western Blotting

Image 1. WB Suggested Anti-LACTB2 Antibody Titration:

0.2-1 ug/ml

ELISA Titer: 1:1562500

Positive Control: 721_B cell lysate