

Datasheet for ABIN2786916  
**anti-SLMO2 antibody (N-Term)**[Go to Product page](#)

## 1 Image

## Overview

Quantity:	100 µL
Target:	SLMO2
Binding Specificity:	N-Term
Reactivity:	Human, Mouse, Rat, Horse, Cow, Dog, Guinea Pig, Rabbit
Host:	Rabbit
Clonality:	Polyclonal
Conjugate:	This SLMO2 antibody is un-conjugated
Application:	Western Blotting (WB)

## Product Details

Immunogen:	The immunogen is a synthetic peptide directed towards the N terminal region of human SLMO2
Sequence:	GVDVLDLRHID PSGKLHSHRL LSTEWGLPSI VKSLIGAART KTYVQEHSV
Predicted Reactivity:	Cow: 100%, Dog: 100%, Guinea Pig: 100%, Horse: 100%, Human: 100%, Mouse: 100%, Rabbit: 100%, Rat: 100%
Characteristics:	This is a rabbit polyclonal antibody against SLMO2. It was validated on Western Blot using a cell lysate as a positive control.
Purification:	Affinity Purified

## Target Details

Target:	SLMO2
---------	-------

## Target Details

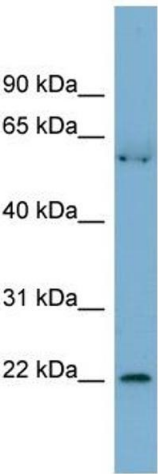
Alternative Name:	SLM02 ( <a href="#">SLM02 Products</a> )
Background:	The function of this protein remains unknown. Alias Symbols: C20orf45, PRELID3B, dJ543J19.5 Protein Interaction Partner: UBC, ELAVL1, Protein Size: 194
Molecular Weight:	21 kDa
Gene ID:	51012
NCBI Accession:	<a href="#">NM_016045</a> , <a href="#">NP_057129</a>
UniProt:	<a href="#">A5GFX0</a>

## Application Details

Application Notes:	Optimal working dilutions should be determined experimentally by the investigator.
Comment:	Antigen size: 194 AA
Restrictions:	For Research Use only

## Handling

Format:	Liquid
Concentration:	Lot specific
Buffer:	Liquid. Purified antibody supplied in 1x PBS buffer with 0.09 % (w/v) sodium azide and 2 % sucrose.
Preservative:	Sodium azide
Precaution of Use:	This product contains Sodium azide: a POISONOUS AND HAZARDOUS SUBSTANCE which should be handled by trained staff only.
Handling Advice:	Avoid repeated freeze-thaw cycles.
Storage:	-20 °C
Storage Comment:	For short term use, store at 2-8°C up to 1 week. For long term storage, store at -20°C in small aliquots to prevent freeze-thaw cycles.



**Western Blotting**

**Image 1. WB Suggested Anti-SLM02 Antibody Titration:**

0.2-1 ug/ml

**Positive Control:** Human Stomach