

Datasheet for ABIN2786920  
**anti-MED31 antibody (C-Term)**[Go to Product page](#)

## 1 Image

## Overview

Quantity:	100 µL
Target:	MED31
Binding Specificity:	C-Term
Reactivity:	Human, Mouse, Rat, Cow, Dog, Guinea Pig, Horse, Rabbit, Saccharomyces cerevisiae, Zebrafish (Danio rerio)
Host:	Rabbit
Clonality:	Polyclonal
Conjugate:	This MED31 antibody is un-conjugated
Application:	Western Blotting (WB)

## Product Details

Immunogen:	The immunogen is a synthetic peptide directed towards the C-terminal region of Rat Med31
Sequence:	YEHFRKELVN AQCAKFIDEQ QILHWQHYSR KRMRLQQALA EQQQQNTTAG
Predicted Reactivity:	Cow: 100%, Dog: 100%, Guinea Pig: 100%, Horse: 100%, Human: 100%, Mouse: 100%, Rabbit: 100%, Rat: 100%, Yeast: 100%, Zebrafish: 100%
Characteristics:	This is a rabbit polyclonal antibody against Med31. It was validated on Western Blot.
Purification:	Affinity Purified

## Target Details

Target:	MED31
---------	-------

## Target Details

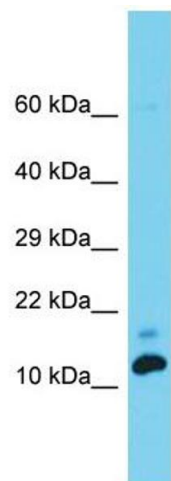
Alternative Name:	Med31 ( <a href="#">MED31 Products</a> )
Background:	The function of this protein remains unknown. Alias Symbols: RGD1309457 Protein Size: 131
Molecular Weight:	14 kDa
Gene ID:	287475
NCBI Accession:	<a href="#">NM_001135813</a> , <a href="#">NP_001129285</a>
UniProt:	<a href="#">D4A7J4</a>
Pathways:	<a href="#">Regulation of Lipid Metabolism by PPARalpha</a>

## Application Details

Application Notes:	Optimal working dilutions should be determined experimentally by the investigator.
Comment:	Antigen size: 131 AA
Restrictions:	For Research Use only

## Handling

Format:	Liquid
Concentration:	Lot specific
Buffer:	Liquid. Purified antibody supplied in 1x PBS buffer with 0.09 % (w/v) sodium azide and 2 % sucrose.
Preservative:	Sodium azide
Precaution of Use:	This product contains Sodium azide: a POISONOUS AND HAZARDOUS SUBSTANCE which should be handled by trained staff only.
Handling Advice:	Avoid repeated freeze-thaw cycles.
Storage:	-20 °C
Storage Comment:	For short term use, store at 2-8°C up to 1 week. For long term storage, store at -20°C in small aliquots to prevent freeze-thaw cycles.



Western Blotting

**Image 1.** Host: Rabbit  
Target Name: Med31  
Sample Tissue: Rat Testis lysates  
Antibody Dilution: 1.0 µg/mL