



[Go to Product page](#)

Datasheet for ABIN2786921
anti-YPEL5 antibody (N-Term)

2 Images

Overview

| | |
|----------------------|---|
| Quantity: | 100 µL |
| Target: | YPEL5 |
| Binding Specificity: | N-Term |
| Reactivity: | Human, Mouse, Rat, Cow, Dog, Guinea Pig, Horse, Rabbit, Zebrafish (Danio rerio) |
| Host: | Rabbit |
| Clonality: | Polyclonal |
| Conjugate: | This YPEL5 antibody is un-conjugated |
| Application: | Western Blotting (WB) |

Product Details

| | |
|-----------------------|---|
| Immunogen: | The immunogen is a synthetic peptide directed towards the N terminal region of human YPEL5 |
| Sequence: | MGRIFLDHIG GTRLFSCANC DTILTNRSEL ISTRFTGATG RAFLFNKVVN |
| Predicted Reactivity: | Cow: 100%, Dog: 100%, Guinea Pig: 100%, Horse: 100%, Human: 100%, Mouse: 100%, Rabbit: 100%, Rat: 100%, Zebrafish: 100% |
| Characteristics: | This is a rabbit polyclonal antibody against YPEL5. It was validated on Western Blot. |
| Purification: | Affinity Purified |

Target Details

| | |
|-------------------|--|
| Target: | YPEL5 |
| Alternative Name: | YPEL5 (YPEL5 Products) |

Target Details

Background: The function of YPEL5 remains unknown.
Alias Symbols: CGI-127
Protein Interaction Partner: SOX2, UBC, ELAVL1,
Protein Size: 121

Molecular Weight: 14 kDa

Gene ID: 51646

NCBI Accession: [NM_016061](#), [NP_057145](#)

UniProt: [P62699](#)

Application Details

Application Notes: Optimal working dilutions should be determined experimentally by the investigator.

Comment: Antigen size: 121 AA

Restrictions: For Research Use only

Handling

Format: Liquid

Concentration: Lot specific

Buffer: Liquid. Purified antibody supplied in 1x PBS buffer with 0.09 % (w/v) sodium azide and 2 % sucrose.

Preservative: Sodium azide

Precaution of Use: This product contains Sodium azide: a POISONOUS AND HAZARDOUS SUBSTANCE which should be handled by trained staff only.

Handling Advice: Avoid repeated freeze-thaw cycles.

Storage: -20 °C

Storage Comment: For short term use, store at 2-8°C up to 1 week. For long term storage, store at -20°C in small aliquots to prevent freeze-thaw cycles.



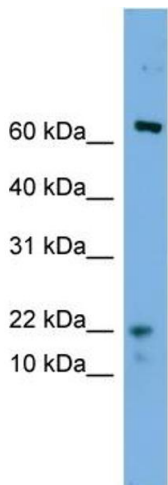
Western Blotting

Image 1. WB Suggested Anti-YPEL5 Antibody Titration:

0.2-1 ug/ml

ELISA Titer: 1:1562500

Positive Control: Hela cell lysate



Rabbit Anti-YPEL5 Antibody
Catalog Number: ARP56822
Lot Number: QC29605
Lane: Hela Cell Lysate

Antibody Titration: 1.0µg/ml
Gel Concentration: 10-20%

Western Blotting

Image 2. WB Suggested Anti-YPEL5

Antibody Titration: 0.2-1 µg/mL ELISA Titer: 1:1562500

Positive Control: Hela cell lysate