



[Go to Product page](#)

Datasheet for ABIN2786925 anti-**GLOD4** antibody (Middle Region)

1 Image

Overview

Quantity:	100 µL
Target:	GLOD4
Binding Specificity:	Middle Region
Reactivity:	Human, Mouse, Rat, Rabbit, Dog, Horse, Pig, Cow
Host:	Rabbit
Clonality:	Polyclonal
Conjugate:	This GLOD4 antibody is un-conjugated
Application:	Western Blotting (WB)

Product Details

Immunogen:	The immunogen is a synthetic peptide directed towards the middle region of human GLOD4
Sequence:	LAVSDLQKSL NYWCNLLGMK IYEKDEEKQR ALLGYADNQC KLELQGVKGG
Predicted Reactivity:	Cow: 93%, Dog: 93%, Horse: 93%, Human: 100%, Mouse: 100%, Pig: 86%, Rabbit: 100%, Rat: 93%
Characteristics:	This is a rabbit polyclonal antibody against GLOD4. It was validated on Western Blot using a cell lysate as a positive control.
Purification:	Affinity Purified

Target Details

Target:	GLOD4
Alternative Name:	GLOD4 (GLOD4 Products)

Target Details

Background: The function of this protein remains unknown.
Alias Symbols: C17orf25, CGI-150, HC71
Protein Interaction Partner: UBC, APP, ELAVL1, PNRC2, NR4A1, BCL2L1, NUDT9,
Protein Size: 298

Molecular Weight: 33 kDa

Gene ID: 51031

NCBI Accession: [NM_016080](#), [NP_057164](#)

UniProt: [D3DTG9](#)

Application Details

Application Notes: Optimal working dilutions should be determined experimentally by the investigator.

Comment: Antigen size: 298 AA

Restrictions: For Research Use only

Handling

Format: Liquid

Concentration: Lot specific

Buffer: Liquid. Purified antibody supplied in 1x PBS buffer with 0.09 % (w/v) sodium azide and 2 % sucrose.

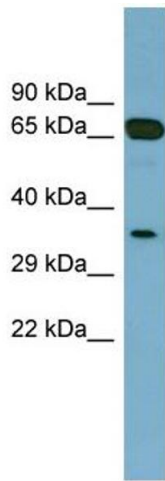
Preservative: Sodium azide

Precaution of Use: This product contains Sodium azide: a POISONOUS AND HAZARDOUS SUBSTANCE which should be handled by trained staff only.

Handling Advice: Avoid repeated freeze-thaw cycles.

Storage: -20 °C

Storage Comment: For short term use, store at 2-8°C up to 1 week. For long term storage, store at -20°C in small aliquots to prevent freeze-thaw cycles.



Western Blotting

Image 1. WB Suggested Anti-GLOD4 Antibody Titration:

0.2-1 ug/ml

ELISA Titer: 1:312500

Positive Control: Human Placenta