

Datasheet for ABIN2786934
anti-PPME1 antibody (N-Term)[Go to Product page](#)

2 Images

Overview

Quantity:	100 µL
Target:	PPME1
Binding Specificity:	N-Term
Reactivity:	Human, Mouse, Rat, Cow, Dog, Pig, Guinea Pig, Horse, Rabbit
Host:	Rabbit
Clonality:	Polyclonal
Conjugate:	This PPME1 antibody is un-conjugated
Application:	Western Blotting (WB), Immunohistochemistry (IHC)

Product Details

Immunogen:	The immunogen is a synthetic peptide directed towards the N terminal region of human PPME1
Sequence:	PGRKRDFSPV PWSQYFESME DVEVENETGK DTRVYKSGS EGPVLLLLHG
Predicted Reactivity:	Cow: 100%, Dog: 100%, Guinea Pig: 81%, Horse: 100%, Human: 100%, Mouse: 100%, Pig: 93%, Rabbit: 100%, Rat: 100%
Characteristics:	This is a rabbit polyclonal antibody against PPME1. It was validated on Western Blot using a cell lysate as a positive control.
Purification:	Affinity Purified

Target Details

Target:	PPME1
---------	-------

Target Details

Alternative Name:	PPME1 (PPME1 Products)
Background:	<p>Protein phosphatase methylesterase-1 catalyzes the demethylation of the protein phosphatase-2A catalytic subunit. Protein phosphatase methylesterase-1 catalyzes the demethylation of the protein phosphatase-2A catalytic subunit (PPP2CA, MIM 176915) (Ogris et al., 1999 [PubMed 10318862]). [supplied by OMIM].</p> <p>Alias Symbols: FLJ22226, PME-1</p> <p>Protein Interaction Partner: TOM1L1, ZPR1, GMPS, OGT, TSTA3, SURF2, PSMD5, PPP1R7, PNP, LPP, AGFG1, HNRNPF, ALAD, LRSAM1, C14orf142, COASY, P3H1, FKBP10, RPRD1B, ERO1L, DBNL, HSPBP1, TTLL12, GPN1, WDR4, ACTR2, UBC, TJAP1, NUDC, SLC9A3R1, RPA1, Ppp2r1a, TDRD1, PPP2R2D, PPP4C, PPP2CB,</p> <p>Protein Size: 386</p>
Molecular Weight:	42 kDa
Gene ID:	51400
NCBI Accession:	NM_016147 , NP_057231
UniProt:	Q9Y570
Pathways:	Methionine Biosynthetic Process

Application Details

Application Notes:	Optimal working dilutions should be determined experimentally by the investigator.
Comment:	Antigen size: 386 AA
Restrictions:	For Research Use only

Handling

Format:	Liquid
Concentration:	Lot specific
Buffer:	Liquid. Purified antibody supplied in 1x PBS buffer with 0.09 % (w/v) sodium azide and 2 % sucrose.
Preservative:	Sodium azide
Precaution of Use:	This product contains Sodium azide: a POISONOUS AND HAZARDOUS SUBSTANCE which should be handled by trained staff only.

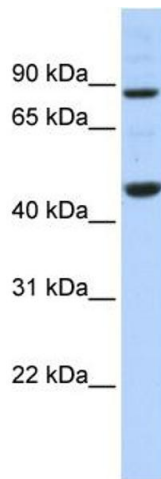
Handling

Handling Advice: Avoid repeated freeze-thaw cycles.

Storage: -20 °C

Storage Comment: For short term use, store at 2-8°C up to 1 week. For long term storage, store at -20°C in small aliquots to prevent freeze-thaw cycles.

Validation report #103662 for Western Blotting (WB)



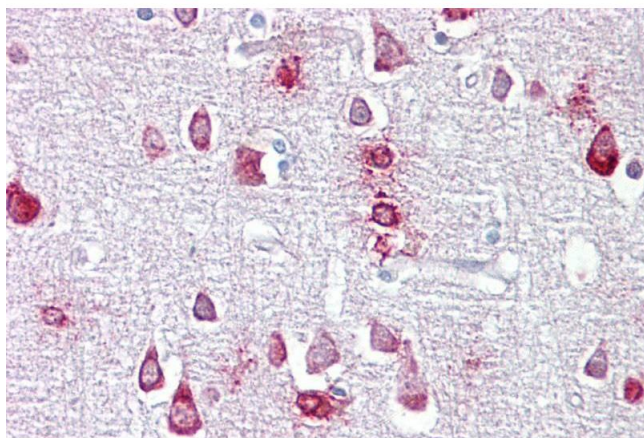
Western Blotting

Image 1. WB Suggested Anti-PPME1 Antibody Titration:

0.2-1 ug/ml

ELISA Titer: 1:312500

Positive Control: 721_B cell lysate



Immunohistochemistry

Image 2. Immunohistochemistry with Brain, cortex tissue at an antibody concentration of 5µg/ml using anti-PPME1 antibody (ARP56845_P050)