

Datasheet for ABIN2786936

**anti-Actin-Like 6B antibody (Middle Region)**[Go to Product page](#)**1** Image

## Overview

Quantity:	100 µL
Target:	Actin-Like 6B (ACTL6B)
Binding Specificity:	Middle Region
Reactivity:	Human, Mouse, Rat, Cow, Rabbit, Dog, Guinea Pig, Horse, Zebrafish (Danio rerio)
Host:	Rabbit
Clonality:	Polyclonal
Conjugate:	This Actin-Like 6B antibody is un-conjugated
Application:	Western Blotting (WB)

## Product Details

Immunogen:	The immunogen is a synthetic peptide directed towards the middle region of human ACTL6B
Sequence:	GHVVTTSIGM CDIDIRPLY GSVIVTGGNT LLQGFTDRLN RELSQKTPPS
Predicted Reactivity:	Cow: 100%, Dog: 100%, Guinea Pig: 100%, Horse: 100%, Human: 100%, Mouse: 100%, Rabbit: 100%, Rat: 100%, Zebrafish: 93%
Characteristics:	This is a rabbit polyclonal antibody against ACTL6B. It was validated on Western Blot using a cell lysate as a positive control.
Purification:	Affinity Purified

## Target Details

Target:	Actin-Like 6B (ACTL6B)
---------	------------------------

## Target Details

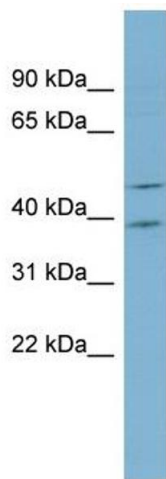
Alternative Name:	ACTL6B ( <a href="#">ACTL6B Products</a> )
Background:	<p>The protein encoded by this gene is a member of a family of actin-related proteins (ARPs) which share significant amino acid sequence identity to conventional actins. Both actins and ARPs have an actin fold, which is an ATP-binding cleft, as a common feat</p> <p>Alias Symbols: ACTL6, BAF53B</p> <p>Protein Interaction Partner: UBC, APP, TK1, SMN1, PLK1, GSK3B, CSNK2B, CDKN1A, ANXA7, COQ9, CTBP1, SMARCA2,</p> <p>Protein Size: 426</p>
Molecular Weight:	47 kDa
Gene ID:	51412
NCBI Accession:	<a href="#">NM_016188</a> , <a href="#">NP_057272</a>
UniProt:	<a href="#">O94805</a>

## Application Details

Application Notes:	Optimal working dilutions should be determined experimentally by the investigator.
Comment:	Antigen size: 426 AA
Restrictions:	For Research Use only

## Handling

Format:	Liquid
Concentration:	Lot specific
Buffer:	Liquid. Purified antibody supplied in 1x PBS buffer with 0.09 % (w/v) sodium azide and 2 % sucrose.
Preservative:	Sodium azide
Precaution of Use:	This product contains Sodium azide: a POISONOUS AND HAZARDOUS SUBSTANCE which should be handled by trained staff only.
Handling Advice:	Avoid repeated freeze-thaw cycles.
Storage:	-20 °C
Storage Comment:	For short term use, store at 2-8°C up to 1 week. For long term storage, store at -20°C in small aliquots to prevent freeze-thaw cycles.



Western Blotting

**Image 1. WB Suggested Anti-ACTL6B Antibody Titration:**

0.2-1 ug/ml

**ELISA Titer:** 1:62500

**Positive Control:** Hela cell lysate