



[Go to Product page](#)

Datasheet for ABIN2786955  
**anti-BIN2 antibody (Middle Region)**

2 Images

### Overview

Quantity:	100 µL
Target:	BIN2
Binding Specificity:	Middle Region
Reactivity:	Human, Rat, Rabbit, Cow, Pig, Dog, Horse
Host:	Rabbit
Clonality:	Polyclonal
Application:	Western Blotting (WB)

### Product Details

Immunogen:	The immunogen is a synthetic peptide directed towards the middle region of human BIN2
Sequence:	EEVLPSTTP SPGGALSPSG QPSSSATEVV LRTRASEGS EQPKKRASIQ
Predicted Reactivity:	Cow: 79%, Dog: 93%, Horse: 93%, Human: 100%, Pig: 86%, Rabbit: 79%, Rat: 77%
Characteristics:	This is a rabbit polyclonal antibody against BIN2. It was validated on Western Blot.
Purification:	Affinity Purified

### Target Details

Target:	BIN2
Alternative Name:	BIN2 ( <a href="#">BIN2 Products</a> )
Background:	The function of BIN2 remains unknown. Alias Symbols: BRAP-1

## Target Details

---

Protein Interaction Partner: UBC, BIN1, TINF2, POT1, TERF1,  
Protein Size: 565

Molecular Weight: 62 kDa

Gene ID: 51411

NCBI Accession: [NM\\_016293](#), [NP\\_057377](#)

UniProt: [Q9UBW5](#)

## Application Details

---

Application Notes: Optimal working dilutions should be determined experimentally by the investigator.

Comment: Antigen size: 565 AA

Restrictions: For Research Use only

## Handling

---

Format: Liquid

Concentration: Lot specific

Buffer: Liquid. Purified antibody supplied in 1x PBS buffer with 0.09 % (w/v) sodium azide and 2 % sucrose.

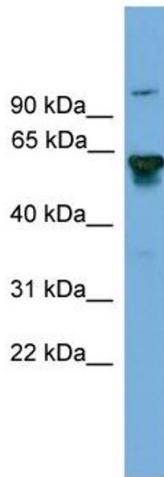
Preservative: Sodium azide

Precaution of Use: This product contains Sodium azide: a POISONOUS AND HAZARDOUS SUBSTANCE which should be handled by trained staff only.

Handling Advice: Avoid repeated freeze-thaw cycles.

Storage: -20 °C

Storage Comment: For short term use, store at 2-8°C up to 1 week. For long term storage, store at -20°C in small aliquots to prevent freeze-thaw cycles.



### Western Blotting

**Image 1. WB Suggested Anti-BIN2 Antibody Titration:** 0.2-1 ug/ml

**ELISA Titer:** 1:312500

**Positive Control:** Human heart



Rabbit Anti-BIN2 Antibody  
Catalog Number: ARP56880  
Lot Number: QC29608  
Lane: Fetal Heart Lysate

Antibody Titration: 1.0µg/ml  
Gel Concentration: 12%

### Western Blotting

**Image 2.** WB Suggested Anti-BIN2

Antibody Titration: 0.2-1 µg/mL ELISA Titer: 1:12500

Positive Control: Human heart