

Datasheet for ABIN2786956
anti-CRBN antibody (N-Term)



[Go to Product page](#)

1 Image

Overview

Quantity:	100 µL
Target:	CRBN
Binding Specificity:	N-Term
Reactivity:	Human, Mouse, Rat, Cow, Guinea Pig, Horse, Rabbit, Zebrafish (Danio rerio)
Host:	Rabbit
Clonality:	Polyclonal
Conjugate:	This CRBN antibody is un-conjugated
Application:	Western Blotting (WB)

Product Details

Immunogen:	The immunogen is a synthetic peptide directed towards the N terminal region of human CRBN
Sequence:	DQDSKEAKKP NIINFDTSLP TSHTYLGADM EEFHGRTLHD DDSCQVIPVL
Predicted Reactivity:	Cow: 100%, Guinea Pig: 100%, Horse: 100%, Human: 100%, Mouse: 100%, Rabbit: 100%, Rat: 100%, Zebrafish: 93%
Characteristics:	This is a rabbit polyclonal antibody against CRBN. It was validated on Western Blot using a cell lysate as a positive control.
Purification:	Affinity Purified

Target Details

Target:	CRBN
---------	------

Target Details

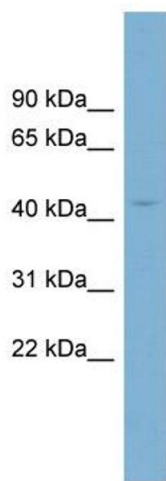
Alternative Name:	CRBN (CRBN Products)
Background:	<p>This gene encodes a protein related to the Lon protease protein family. In rodents and other mammals this gene product is found in the cytoplasm localized with a calcium channel membrane protein, and is thought to play a role in brain development. Mutatio</p> <p>Alias Symbols: DKFZp781K0715, MGC27358, MRT2A, MRT2</p> <p>Protein Interaction Partner: PAK7, RBPMS, MEIS2, DDB1, IKZF3, IKZF1, SUV39H1, KDM1A, UBC, COPS4, COPS6, COPS3, PSMB4, PSMA2, COPS5, CUL4A, PRKAA1, RBX1,</p> <p>Protein Size: 442</p>
Molecular Weight:	50 kDa
Gene ID:	51185
NCBI Accession:	NM_016302 , NP_057386
UniProt:	Q96SW2

Application Details

Application Notes:	Optimal working dilutions should be determined experimentally by the investigator.
Comment:	Antigen size: 442 AA
Restrictions:	For Research Use only

Handling

Format:	Liquid
Concentration:	Lot specific
Buffer:	Liquid. Purified antibody supplied in 1x PBS buffer with 0.09 % (w/v) sodium azide and 2 % sucrose.
Preservative:	Sodium azide
Precaution of Use:	This product contains Sodium azide: a POISONOUS AND HAZARDOUS SUBSTANCE which should be handled by trained staff only.
Handling Advice:	Avoid repeated freeze-thaw cycles.
Storage:	-20 °C
Storage Comment:	For short term use, store at 2-8°C up to 1 week. For long term storage, store at -20°C in small aliquots to prevent freeze-thaw cycles.



Western Blotting

Image 1. WB Suggested Anti-CRBN Antibody Titration:
0.2-1 ug/ml

Positive Control: COLO205 cell lysate