

Datasheet for ABIN2786960  
**anti-DCDC2 antibody (N-Term)**[Go to Product page](#)

## 2 Images

## Overview

Quantity:	100 µL
Target:	DCDC2
Binding Specificity:	N-Term
Reactivity:	Human, Mouse, Rat, Dog, Guinea Pig, Rabbit, Cow, Horse
Host:	Rabbit
Clonality:	Polyclonal
Conjugate:	This DCDC2 antibody is un-conjugated
Application:	Western Blotting (WB)

## Product Details

Immunogen:	The immunogen is a synthetic peptide corresponding to a region of Mouse
Sequence:	QIESGGNYVA GGPEAFKKLN YLDIGEIKKR PMEAVNTEVK PVIHSRINVS
Predicted Reactivity:	Cow: 100%, Dog: 93%, Guinea Pig: 93%, Horse: 100%, Human: 100%, Mouse: 100%, Rabbit: 86%, Rat: 100%
Characteristics:	This is a rabbit polyclonal antibody against Dcdc2a. It was validated on Western Blot.
Purification:	Affinity Purified

## Target Details

Target:	DCDC2
Alternative Name:	Dcdc2a ( <a href="#">DCDC2 Products</a> )

## Target Details

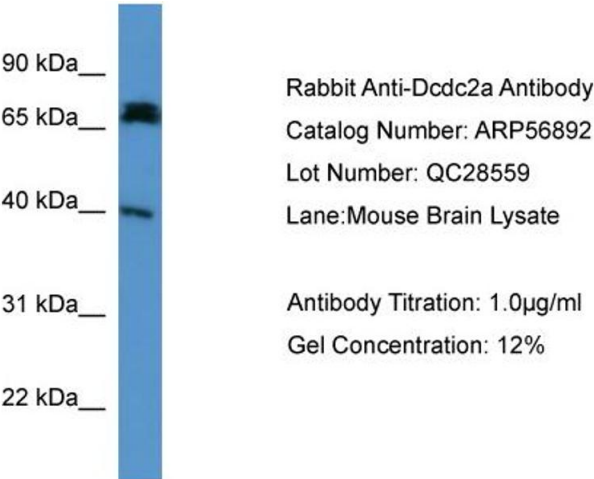
Background:	<p>This gene encodes a member of the doublecortin family. The protein encoded by this gene contains two doublecortin domains. The doublecortin domain has been demonstrated to bind tubulin and enhance microtubule polymerization.</p> <p>Alias Symbols: Dcdc2, MGC54817, RU2, AW492955</p> <p>Protein Size: 368</p>
Molecular Weight:	40 kDa
Gene ID:	195208
NCBI Accession:	<a href="#">NM_177577</a> , <a href="#">NP_808245</a>

## Application Details

Application Notes:	Optimal working dilutions should be determined experimentally by the investigator.
Comment:	Antigen size: 368 AA
Restrictions:	For Research Use only

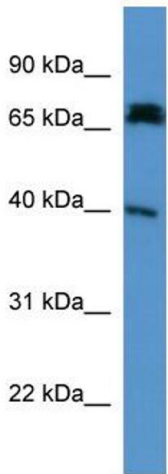
## Handling

Format:	Liquid
Concentration:	Lot specific
Buffer:	Liquid. Purified antibody supplied in 1x PBS buffer with 0.09 % (w/v) sodium azide and 2 % sucrose.
Preservative:	Sodium azide
Precaution of Use:	This product contains Sodium azide: a POISONOUS AND HAZARDOUS SUBSTANCE which should be handled by trained staff only.
Handling Advice:	Avoid repeated freeze-thaw cycles.
Storage:	-20 °C
Storage Comment:	For short term use, store at 2-8°C up to 1 week. For long term storage, store at -20°C in small aliquots to prevent freeze-thaw cycles.



Western Blotting

**Image 1.** WB Suggested Anti-Dcdc2a  
Antibody Titration: 0.2-1 µg/mL ELISA Titer: 1:1562500  
Positive Control: Mouse Brain



Western Blotting

**Image 2. WB Suggested Anti-Dcdc2a Antibody Titration:**  
0.2-1 µg/ml  
**ELISA Titer:** 1:1562500  
**Positive Control:** Mouse Brain