

Datasheet for ABIN2786961
anti-DCDC2 antibody (Middle Region)[Go to Product page](#)

2 Images

Overview

Quantity:	100 µL
Target:	DCDC2
Binding Specificity:	Middle Region
Reactivity:	Human, Mouse, Rat, Dog, Guinea Pig, Rabbit, Cow, Horse
Host:	Rabbit
Clonality:	Polyclonal
Conjugate:	This DCDC2 antibody is un-conjugated
Application:	Western Blotting (WB)

Product Details

Immunogen:	The immunogen is a synthetic peptide directed towards the middle region of human DCDC2
Sequence:	KGSGNDRHSK STVGSSDNSS PQPLKRKGKK EDVNSEKLT LKQNVKLKNS
Predicted Reactivity:	Cow: 93%, Dog: 79%, Guinea Pig: 100%, Horse: 93%, Human: 100%, Mouse: 100%, Rabbit: 100%, Rat: 100%
Characteristics:	This is a rabbit polyclonal antibody against DCDC2. It was validated on Western Blot using a cell lysate as a positive control.
Purification:	Affinity Purified

Target Details

Target:	DCDC2
---------	-------

Target Details

Alternative Name:	DCDC2 (DCDC2 Products)
Background:	<p>This gene encodes a member of the doublecortin family. The protein encoded by this gene contains two doublecortin domains. The doublecortin domain has been demonstrated to bind tubulin and enhance microtubule polymerization. Mutations in this gene have been associated with Reading Disability (RD), also referred to as developmental dyslexia. Alternatively spliced transcript variants encoding the same protein have been found for this gene.</p> <p>Alias Symbols: DCDC2A, RU2, RU2S</p> <p>Protein Interaction Partner: MRFAP1, NIF3L1, APP,</p> <p>Protein Size: 476</p>
Molecular Weight:	53 kDa
Gene ID:	51473
NCBI Accession:	NM_016356 , NP_057440
UniProt:	Q9UHG0

Application Details

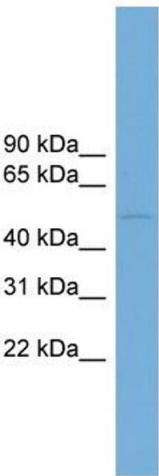
Application Notes:	Optimal working dilutions should be determined experimentally by the investigator.
Comment:	Antigen size: 476 AA
Restrictions:	For Research Use only

Handling

Format:	Liquid
Concentration:	Lot specific
Buffer:	Liquid. Purified antibody supplied in 1x PBS buffer with 0.09 % (w/v) sodium azide and 2 % sucrose.
Preservative:	Sodium azide
Precaution of Use:	This product contains Sodium azide: a POISONOUS AND HAZARDOUS SUBSTANCE which should be handled by trained staff only.
Handling Advice:	Avoid repeated freeze-thaw cycles.
Storage:	-20 °C
Storage Comment:	For short term use, store at 2-8°C up to 1 week. For long term storage, store at -20°C in small

aliquots to prevent freeze-thaw cycles.

Images

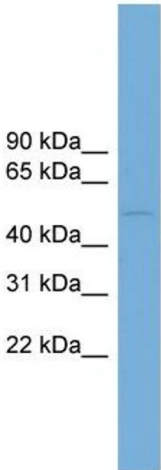


Western Blotting

Image 1. WB Suggested Anti-DCDC2 Antibody Titration:
0.2-1 ug/ml

ELISA Titer: 1:312500

Positive Control: Hela cell lysate



Rabbit Anti-DCDC2 Antibody
Catalog Number: ARP56893
Lot Number: QC28560
Lane: Hela Cell Lysate

Antibody Titration: 1.0µg/ml
Gel Concentration: 12%

Western Blotting

Image 2. WB Suggested Anti-DCDC2
Antibody Titration: 0.2-1 µg/mL ELISA Titer: 1::12500

Positive Control: Hela cell lysate