

Datasheet for ABIN2786966

## anti-C11orf73 antibody (Middle Region)



[Go to Product page](#)

### 1 Image

#### Overview

|                      |  |
|----------------------|--|
| Quantity:            | 100 µL   |
| Target:              | C11orf73   |
| Binding Specificity: | Middle Region  |
| Reactivity:          | Human, Mouse, Rat, Horse, Cow, Dog, Guinea Pig, Rabbit, Zebrafish (Danio rerio), Pig, Saccharomyces cerevisiae |
| Host:                | Rabbit   |
| Clonality:           | Polyclonal   |
| Conjugate:           | This C11orf73 antibody is un-conjugated  |
| Application:         | Western Blotting (WB)  |

#### Product Details

|                       |   |
|-----------------------|---|
| Immunogen:            | The immunogen is a synthetic peptide directed towards the middle region of human C11orf73   |
| Sequence:             | DNFYNFASSF AVSQAQMTPS PSEMFIPANV VLKWYENFQR RLAQNPLFWK  |
| Predicted Reactivity: | Cow: 100%, Dog: 100%, Guinea Pig: 90%, Horse: 100%, Human: 100%, Mouse: 100%, Pig: 100%, Rabbit: 93%, Rat: 100%, Yeast: 90%, Zebrafish: 86% |
| Characteristics:      | This is a rabbit polyclonal antibody against C11orf73. It was validated on Western Blot using a cell lysate as a positive control.          |
| Purification:         | Affinity Purified   |

#### Target Details

|         |          |
|---------|----------|
| Target: | C11orf73 |
|---------|----------|

## Target Details

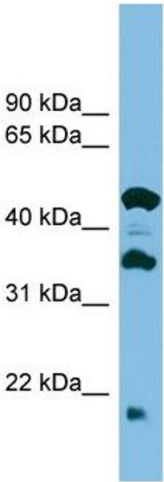
|                   |  |
|-------------------|--|
| Alternative Name: | C11orf73 ( <a href="#">C11orf73 Products</a> )   |
| Background:       | The function of this protein remains unknown.<br>Alias Symbols: HSPC138, HSPC179, L7RN6<br>Protein Interaction Partner: APP, UBC,<br>Protein Size: 197 |
| Molecular Weight: | 21 kDa   |
| Gene ID:          | 51501  |
| NCBI Accession:   | <a href="#">NM_016401</a> , <a href="#">NP_057485</a>  |
| UniProt:          | <a href="#">Q53FT3</a>   |
| Pathways:         | <a href="#">Protein targeting to Nucleus</a>   |

## Application Details

|                    |  |
|--------------------|--|
| Application Notes: | Optimal working dilutions should be determined experimentally by the investigator. |
| Comment:           | Antigen size: 197 AA   |
| Restrictions:      | For Research Use only  |

## Handling

|                    |   |
|--------------------|---|
| Format:            | Liquid  |
| Concentration:     | Lot specific  |
| Buffer:            | Liquid. Purified antibody supplied in 1x PBS buffer with 0.09 % (w/v) sodium azide and 2 % sucrose.                                     |
| Preservative:      | Sodium azide  |
| Precaution of Use: | This product contains Sodium azide: a POISONOUS AND HAZARDOUS SUBSTANCE which should be handled by trained staff only.                  |
| Handling Advice:   | Avoid repeated freeze-thaw cycles.  |
| Storage:           | -20 °C  |
| Storage Comment:   | For short term use, store at 2-8°C up to 1 week. For long term storage, store at -20°C in small aliquots to prevent freeze-thaw cycles. |



**Western Blotting**

**Image 1.** WB Suggested Anti-C11orf73 Antibody Titration:  
0.2-1 ug/ml ELISA Titer: 1:1562500 Positive Control: ACHN cell lysate