



Datasheet for ABIN2786975  
**anti-FAM178B antibody (Middle Region)**



[Go to Product page](#)

1 Image

1 Publication

### Overview

Quantity:	100 µL
Target:	FAM178B
Binding Specificity:	Middle Region
Reactivity:	Human, Cow, Dog, Guinea Pig, Mouse, Pig, Rabbit, Rat, Horse
Host:	Rabbit
Clonality:	Polyclonal
Conjugate:	This FAM178B antibody is un-conjugated
Application:	Western Blotting (WB)

### Product Details

Immunogen:	The immunogen is a synthetic peptide directed towards the middle region of human LOC51252
Sequence:	VVSCQDITPD QWGELQLLCM QLDRHISTQI RESPQAMHRT MLKDLATQTY
Predicted Reactivity:	Cow: 86%, Dog: 86%, Guinea Pig: 86%, Horse: 93%, Human: 100%, Mouse: 93%, Pig: 93%, Rabbit: 93%, Rat: 93%
Characteristics:	This is a rabbit polyclonal antibody against LOC51252. It was validated on Western Blot using a cell lysate as a positive control.
Purification:	Affinity Purified

### Target Details

Target:	FAM178B
---------	---------

## Target Details

---

Alternative Name: FAM178B ([FAM178B Products](#))

Background: The function of this protein remains unknown.  
Alias Symbols: -  
Protein Interaction Partner: LRSAM1,  
Protein Size: 647

Molecular Weight: 71 kDa

Gene ID: 51252

NCBI Accession: [NM\\_001122646](#), [NP\\_001116118](#)

UniProt: [Q8IXR5](#)

## Application Details

---

Application Notes: Optimal working dilutions should be determined experimentally by the investigator.

Comment: Antigen size: 647 AA

Restrictions: For Research Use only

## Handling

---

Format: Liquid

Concentration: Lot specific

Buffer: Liquid. Purified antibody supplied in 1x PBS buffer with 0.09 % (w/v) sodium azide and 2 % sucrose.

Preservative: Sodium azide

Precaution of Use: This product contains Sodium azide: a POISONOUS AND HAZARDOUS SUBSTANCE which should be handled by trained staff only.

Handling Advice: Avoid repeated freeze-thaw cycles.

Storage: -20 °C

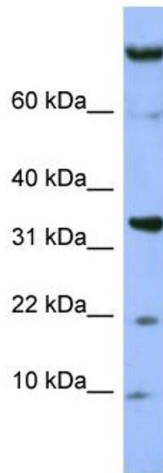
Storage Comment: For short term use, store at 2-8°C up to 1 week. For long term storage, store at -20°C in small aliquots to prevent freeze-thaw cycles.

## Publications

---

Product cited in: Ewing, Chu, Elisma, Li, Taylor, Climie, McBroom-Cerajewski, Robinson, OConnor, Li, Taylor,

Dharsee, Ho, Heilbut, Moore, Zhang, Ornatsky, Bukhman, Ethier, Sheng, Vasilescu, Abu-Farha, Lambert, Duewel et al.: "Large-scale mapping of human protein-protein interactions by mass spectrometry. ..." in: **Molecular systems biology**, Vol. 3, pp. 89, (2007) ([PubMed](#)).



#### Western Blotting

**Image 1. WB Suggested Anti-FAM178B Antibody**

**Titration:** 0.2-1 ug/ml

**ELISA Titer:** 1:1562500

**Positive Control:** HepG2 cell lysate