

Datasheet for ABIN2786976  
**anti-MRPL37 antibody (N-Term)**[Go to Product page](#)

## 1 Image

## Overview

Quantity:	100 µL
Target:	MRPL37
Binding Specificity:	N-Term
Reactivity:	Human, Mouse, Rat, Cow, Dog, Guinea Pig, Horse, Rabbit
Host:	Rabbit
Clonality:	Polyclonal
Conjugate:	This MRPL37 antibody is un-conjugated
Application:	Western Blotting (WB)

## Product Details

Immunogen:	The immunogen is a synthetic peptide directed towards the N terminal region of human MRPL37
Sequence:	VRSTRKSEPP PLDRVYEIPG LEPITFAGKM HFVPWLARPI FPPWDRGYKD
Predicted Reactivity:	Cow: 100%, Dog: 86%, Guinea Pig: 100%, Horse: 100%, Human: 100%, Mouse: 100%, Rabbit: 100%, Rat: 100%
Characteristics:	This is a rabbit polyclonal antibody against MRPL37. It was validated on Western Blot using a cell lysate as a positive control.
Purification:	Affinity Purified

## Target Details

Target:	MRPL37
---------	--------

## Target Details

Alternative Name:	MRPL37 ( <a href="#">MRPL37 Products</a> )
Background:	<p>Mammalian mitochondrial ribosomal proteins are encoded by nuclear genes and help in protein synthesis within the mitochondrion. Mitochondrial ribosomes (mitoribosomes) consist of a small 28S subunit and a large 39S subunit. They have an estimated 75 % prot</p> <p>Alias Symbols: MGC878, MRP-L2, MRPL2, RPML2, L37mt, MRP-L37</p> <p>Protein Interaction Partner: UBC, NEDD8, NPM1, MRPL45, MRPL24, MRPL44, MRPL9, MRPL32, MRPL38, MRPL40, MRPL41, TSR1, MRPL50, MRPL39, MRPL51, MRPL2, MRPL42, FAF2, MRPL12, HNRNPM, DLD, ABCC2, CUL3, TCF3, TK1, SMN1, ICT1, HNRNPA1,</p> <p>Protein Size: 423</p>
Molecular Weight:	48 kDa
Gene ID:	51253
NCBI Accession:	<a href="#">NM_016491</a> , <a href="#">NP_057575</a>
UniProt:	<a href="#">Q9BZE1</a>

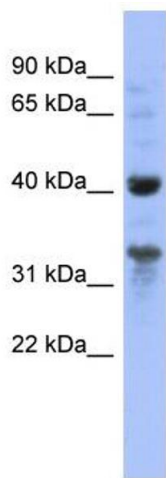
## Application Details

Application Notes:	Optimal working dilutions should be determined experimentally by the investigator.
Comment:	Antigen size: 423 AA
Restrictions:	For Research Use only

## Handling

Format:	Liquid
Concentration:	Lot specific
Buffer:	Liquid. Purified antibody supplied in 1x PBS buffer with 0.09 % (w/v) sodium azide and 2 % sucrose.
Preservative:	Sodium azide
Precaution of Use:	This product contains Sodium azide: a POISONOUS AND HAZARDOUS SUBSTANCE which should be handled by trained staff only.
Handling Advice:	Avoid repeated freeze-thaw cycles.
Storage:	-20 °C
Storage Comment:	For short term use, store at 2-8°C up to 1 week. For long term storage, store at -20°C in small

aliquots to prevent freeze-thaw cycles.



Western Blotting

**Image 1. WB Suggested Anti-MRPL37 Antibody Titration:**

0.2-1 ug/ml

**ELISA Titer:** 1:1562500

**Positive Control:** 293T cell lysate