

Datasheet for ABIN2786978
anti-TBC1D7 antibody (C-Term)



[Go to Product page](#)

1 Image

Overview

Quantity:	100 µL
Target:	TBC1D7
Binding Specificity:	C-Term
Reactivity:	Human, Mouse, Rat, Guinea Pig, Horse, Cow, Dog, Goat, Rabbit, Pig
Host:	Rabbit
Clonality:	Polyclonal
Conjugate:	This TBC1D7 antibody is un-conjugated
Application:	Western Blotting (WB)

Product Details

Immunogen:	The immunogen is a synthetic peptide directed towards the C-terminal region of Mouse Tbc1d7
Sequence:	ISRCFVKQLN NKYRDALPQL PKAFEQYLNL EDSRLLSHLK TCSAVSKLPY
Predicted Reactivity:	Cow: 100%, Dog: 100%, Goat: 100%, Guinea Pig: 93%, Horse: 100%, Human: 100%, Mouse: 100%, Pig: 100%, Rabbit: 100%, Rat: 93%
Characteristics:	This is a rabbit polyclonal antibody against Tbc1d7. It was validated on Western Blot.
Purification:	Affinity Purified

Target Details

Target:	TBC1D7
Alternative Name:	Tbc1d7 (TBC1D7 Products)

Target Details

Background:	<p>Tbc1d7 is a component of the TSC-TBC complex, that contains TBC1D7 in addition to the TSC1-TSC2 complex and consists of the functional complex possessing GTPase-activating protein (GAP) activity toward RHEB in response to alterations in specific cellular growth conditions. The small GTPase RHEB is a direct activator of the protein kinase activity of mTORC1 and the TSC-TBC complex acts as a negative regulator of mTORC1 signaling cascade by acting as a GAP for RHEB. Participates in the proper sensing of growth factors and glucose, but not amino acids, by mTORC1. It is unclear whether TBC1D7 acts as a GTPase-activating protein and additional studies are required to answer this question.</p> <p>Alias Symbols: 2610009C09Rik</p> <p>Protein Interaction Partner: Ywhae,</p> <p>Protein Size: 293</p>
-------------	---

Molecular Weight:	32 kDa
-------------------	--------

Gene ID:	67046
----------	-------

NCBI Accession:	NM_025935 , NP_080211
-----------------	---

UniProt:	Q9D0K0
----------	------------------------

Application Details

Application Notes:	Optimal working dilutions should be determined experimentally by the investigator.
--------------------	--

Comment:	Antigen size: 293 AA
----------	----------------------

Restrictions:	For Research Use only
---------------	-----------------------

Handling

Format:	Liquid
---------	--------

Concentration:	Lot specific
----------------	--------------

Buffer:	Liquid. Purified antibody supplied in 1x PBS buffer with 0.09 % (w/v) sodium azide and 2 % sucrose.
---------	---

Preservative:	Sodium azide
---------------	--------------

Precaution of Use:	This product contains Sodium azide: a POISONOUS AND HAZARDOUS SUBSTANCE which should be handled by trained staff only.
--------------------	--

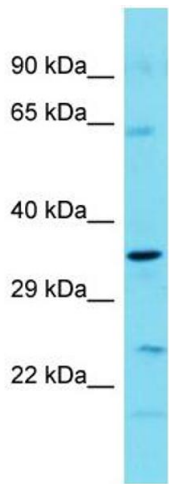
Handling Advice:	Avoid repeated freeze-thaw cycles.
------------------	------------------------------------

Storage:	-20 °C
----------	--------

Handling

Storage Comment: For short term use, store at 2-8°C up to 1 week. For long term storage, store at -20°C in small aliquots to prevent freeze-thaw cycles.

Images



Western Blotting
Image 1. Host: Rabbit
Target Name: Tbc1d7
Sample Tissue: Mouse Stomach lysates
Antibody Dilution: 1.0 µg/mL