

Datasheet for ABIN2786982

anti-DNAJC27 antibody (Middle Region)[Go to Product page](#)**1** Image

Overview

Quantity:	100 µL
Target:	DNAJC27
Binding Specificity:	Middle Region
Reactivity:	Human, Mouse, Rat, Cow, Dog, Guinea Pig, Horse, Rabbit, Zebrafish (Danio rerio), Saccharomyces cerevisiae
Host:	Rabbit
Clonality:	Polyclonal
Conjugate:	This DNAJC27 antibody is un-conjugated
Application:	Western Blotting (WB)

Product Details

Immunogen:	The immunogen is a synthetic peptide directed towards the middle region of human RBJ
Sequence:	CVDESEGLRW AESKGFLYFE TSAQTGEGIN EMFQTFYISI VDLCEGGKR
Predicted Reactivity:	Cow: 100%, Dog: 100%, Guinea Pig: 100%, Horse: 100%, Human: 100%, Mouse: 100%, Rabbit: 100%, Rat: 100%, Yeast: 79%, Zebrafish: 93%
Characteristics:	This is a rabbit polyclonal antibody against RBJ. It was validated on Western Blot using a cell lysate as a positive control.
Purification:	Affinity Purified

Target Details

Target:	DNAJC27
---------	---------

Target Details

Alternative Name:	RBJ (DNAJC27 Products)
Background:	The exact function of this protein remains unknown. Alias Symbols: DKFZp434N211, RabJS, RBJ Protein Interaction Partner: TFCP2, Protein Size: 273

Molecular Weight: 31 kDa

Gene ID: 51277

NCBI Accession: [NM_016544](#), [NP_057628](#)

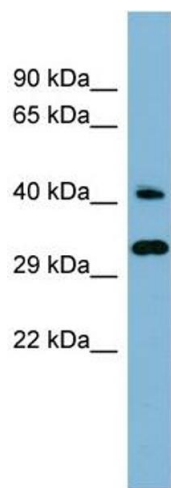
UniProt: [Q9NZQ0](#)

Application Details

Application Notes:	Optimal working dilutions should be determined experimentally by the investigator.
Comment:	Antigen size: 273 AA
Restrictions:	For Research Use only

Handling

Format:	Liquid
Concentration:	Lot specific
Buffer:	Liquid. Purified antibody supplied in 1x PBS buffer with 0.09 % (w/v) sodium azide and 2 % sucrose.
Preservative:	Sodium azide
Precaution of Use:	This product contains Sodium azide: a POISONOUS AND HAZARDOUS SUBSTANCE which should be handled by trained staff only.
Handling Advice:	Avoid repeated freeze-thaw cycles.
Storage:	-20 °C
Storage Comment:	For short term use, store at 2-8°C up to 1 week. For long term storage, store at -20°C in small aliquots to prevent freeze-thaw cycles.



Western Blotting

Image 1. WB Suggested Anti-RBJ Antibody Titration: 0.2-1 ug/ml

ELISA Titer: 1:1562500

Positive Control: Human kidney