

Datasheet for ABIN2786985  
**anti-RASL12 antibody (N-Term)**



[Go to Product page](#)

1 Image

## Overview

Quantity:	100 µL
Target:	RASL12
Binding Specificity:	N-Term
Reactivity:	Human, Mouse, Rat, Cow, Horse, Rabbit, Guinea Pig
Host:	Rabbit
Clonality:	Polyclonal
Conjugate:	This RASL12 antibody is un-conjugated
Application:	Western Blotting (WB)

## Product Details

Immunogen:	The immunogen is a synthetic peptide directed towards the N terminal region of human RASL12
Sequence:	MSSVFGKPRA GSGPQSAPLE VNLAILGRRG AGKSALTVKF LTKRFISEYD
Predicted Reactivity:	Cow: 100%, Guinea Pig: 100%, Horse: 93%, Human: 100%, Mouse: 100%, Rabbit: 100%, Rat: 100%
Characteristics:	This is a rabbit polyclonal antibody against RASL12. It was validated on Western Blot using a cell lysate as a positive control.
Purification:	Affinity Purified

## Target Details

Target:	RASL12
---------	--------

## Target Details

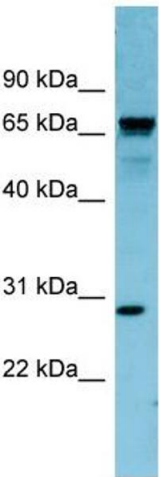
Alternative Name:	RASL12 ( <a href="#">RASL12 Products</a> )
Background:	<p>The function of this protein remains unknown.</p> <p>Alias Symbols: RIS</p> <p>Protein Interaction Partner: APP, SMURF2, BMPR1B, SMAD3, SMAD1, SMAD2, SMAD4, TGFB1, ACVR1,</p> <p>Protein Size: 266</p>
Molecular Weight:	30 kDa
Gene ID:	51285
NCBI Accession:	<a href="#">NM_016563</a> , <a href="#">NP_057647</a>
UniProt:	<a href="#">Q9NYN1</a>

## Application Details

Application Notes:	Optimal working dilutions should be determined experimentally by the investigator.
Comment:	Antigen size: 266 AA
Restrictions:	For Research Use only

## Handling

Format:	Liquid
Concentration:	Lot specific
Buffer:	Liquid. Purified antibody supplied in 1x PBS buffer with 0.09 % (w/v) sodium azide and 2 % sucrose.
Preservative:	Sodium azide
Precaution of Use:	This product contains Sodium azide: a POISONOUS AND HAZARDOUS SUBSTANCE which should be handled by trained staff only.
Handling Advice:	Avoid repeated freeze-thaw cycles.
Storage:	-20 °C
Storage Comment:	For short term use, store at 2-8°C up to 1 week. For long term storage, store at -20°C in small aliquots to prevent freeze-thaw cycles.



Western Blotting

**Image 1. WB Suggested Anti-RASL12 Antibody Titration:**

0.2-1 ug/ml

**ELISA Titer:** 1:1562500

**Positive Control:** MCF7 cell lysate