

Datasheet for ABIN2786987  
**anti-COA4 antibody (Middle Region)**

## 2 Images

[Go to Product page](#)

## Overview

|                      |  |
|----------------------|--|
| Quantity:            | 100 µL                                       |
| Target:              | COA4   |
| Binding Specificity: | Middle Region                                |
| Reactivity:          | Human, Horse, Rat, Guinea Pig, Mouse, Rabbit |
| Host:                | Rabbit                                       |
| Clonality:           | Polyclonal                                   |
| Conjugate:           | This COA4 antibody is un-conjugated          |
| Application:         | Western Blotting (WB)                        |

## Product Details

|                       |   |
|-----------------------|---|
| Immunogen:            | The immunogen is a synthetic peptide directed towards the middle region of human CHCHD8 |
| Sequence:             | SHFAVQECMA QHQDWRQCQP QVQAFKDCMS EQQARRQEEL QRRREQAGAH                                  |
| Predicted Reactivity: | Guinea Pig: 86%, Horse: 79%, Human: 100%, Mouse: 79%, Rabbit: 83%, Rat: 86%             |
| Characteristics:      | This is a rabbit polyclonal antibody against CHCHD8. It was validated on Western Blot.  |
| Purification:         | Affinity Purified   |

## Target Details

|                   |  |
|-------------------|--|
| Target:           | COA4                                     |
| Alternative Name: | CHCHD8 ( <a href="#">COA4 Products</a> ) |
| Background:       | The function of CHCHD8 remains unknown.  |

## Target Details

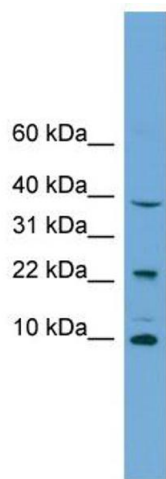
|                   |   |
|-------------------|---|
|                   | Alias Symbols: DKFZp762H1711, E2IG2, MGC117206, CHCHD8<br>Protein Interaction Partner: UBC,<br>Protein Size: 87 |
| Molecular Weight: | 10 kDa  |
| Gene ID:          | 51287   |
| NCBI Accession:   | <a href="#">NM_016565</a> , <a href="#">NP_057649</a>   |
| UniProt:          | <a href="#">Q9NYJ1</a>  |

## Application Details

|                    |  |
|--------------------|--|
| Application Notes: | Optimal working dilutions should be determined experimentally by the investigator. |
| Comment:           | Antigen size: 87 AA  |
| Restrictions:      | For Research Use only  |

## Handling

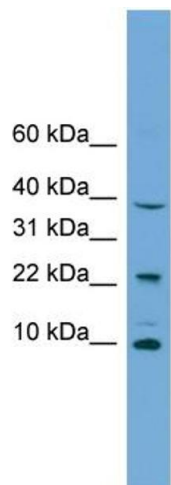
|                    |   |
|--------------------|---|
| Format:            | Liquid  |
| Concentration:     | Lot specific  |
| Buffer:            | Liquid. Purified antibody supplied in 1x PBS buffer with 0.09 % (w/v) sodium azide and 2 % sucrose.                                     |
| Preservative:      | Sodium azide  |
| Precaution of Use: | This product contains Sodium azide: a POISONOUS AND HAZARDOUS SUBSTANCE which should be handled by trained staff only.                  |
| Handling Advice:   | Avoid repeated freeze-thaw cycles.  |
| Storage:           | -20 °C  |
| Storage Comment:   | For short term use, store at 2-8°C up to 1 week. For long term storage, store at -20°C in small aliquots to prevent freeze-thaw cycles. |



Western Blotting

**Image 1. WB Suggested Anti-CHCHD8 Antibody Titration:**  
0.2-1 ug/ml

**Positive Control:** Jurkat cell lysate



Rabbit Anti-CHCHD8 Antibody  
Catalog Number: ARP56948  
Lot Number: QC27784  
Lane: Jurkat Cell Lysate

Antibody Titration: 1.0µg/ml  
Gel Concentration: 10-20%

Western Blotting

**Image 2. WB Suggested Anti-CHCHD8**  
Antibody Titration: 0.2-1 µg/mL  
Positive Control: Jurkat cell lysate