

Datasheet for ABIN2787008
anti-ZCCHC8 antibody (C-Term)



[Go to Product page](#)

1 Image

Overview

Quantity:	100 µL
Target:	ZCCHC8
Binding Specificity:	C-Term
Reactivity:	Human, Mouse, Dog, Rabbit, Rat, Cow, Guinea Pig, Horse, Pig
Host:	Rabbit
Clonality:	Polyclonal
Conjugate:	This ZCCHC8 antibody is un-conjugated
Application:	Western Blotting (WB)

Product Details

Immunogen:	The immunogen is a synthetic peptide directed towards the C-terminal region of Rat Zcchc8
Sequence:	FQPPLPPGTP PPLPQGTPPP LFTPPLPKGT PPLTPSDSPQ PRPTASGVDE
Predicted Reactivity:	Cow: 100%, Dog: 100%, Guinea Pig: 93%, Horse: 100%, Human: 100%, Mouse: 100%, Pig: 100%, Rabbit: 93%, Rat: 100%
Characteristics:	This is a rabbit polyclonal antibody against Zcchc8. It was validated on Western Blot.
Purification:	Affinity Purified

Target Details

Target:	ZCCHC8
Alternative Name:	Zcchc8 (ZCCHC8 Products)

Target Details

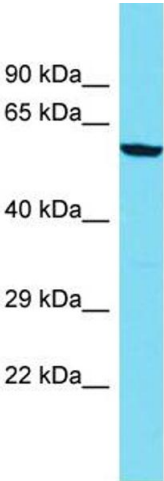
Background:	The function of this protein remains unknown. Alias Symbols: - Protein Size: 476
Molecular Weight:	52 kDa
Gene ID:	288661
NCBI Accession:	NM_001105929 , NP_001099399

Application Details

Application Notes:	Optimal working dilutions should be determined experimentally by the investigator.
Comment:	Antigen size: 476 AA
Restrictions:	For Research Use only

Handling

Format:	Liquid
Concentration:	Lot specific
Buffer:	Liquid. Purified antibody supplied in 1x PBS buffer with 0.09 % (w/v) sodium azide and 2 % sucrose.
Preservative:	Sodium azide
Precaution of Use:	This product contains Sodium azide: a POISONOUS AND HAZARDOUS SUBSTANCE which should be handled by trained staff only.
Handling Advice:	Avoid repeated freeze-thaw cycles.
Storage:	-20 °C
Storage Comment:	For short term use, store at 2-8°C up to 1 week. For long term storage, store at -20°C in small aliquots to prevent freeze-thaw cycles.



Western Blotting

Image 1. Host: Rabbit
Target Name: Zcchc8
Sample Tissue: Rat Thymus lysates
Antibody Dilution: 1.0 µg/mL