



[Go to Product page](#)

Datasheet for ABIN2787018

anti-LRRC49 antibody (N-Term)

1 Image

1 Publication

Overview

Quantity:	100 µL
Target:	LRRC49
Binding Specificity:	N-Term
Reactivity:	Human, Mouse, Rat, Cow, Rabbit, Dog, Guinea Pig, Horse
Host:	Rabbit
Clonality:	Polyclonal
Conjugate:	This LRRC49 antibody is un-conjugated
Application:	Western Blotting (WB)

Product Details

Immunogen:	The immunogen is a synthetic peptide directed towards the N terminal region of human LRRC49
Sequence:	KVEFKLNKDT SSFPGRLQLH DLERNYSSRQ GDHINLVSSS LSSFPIQRS
Predicted Reactivity:	Cow: 100%, Dog: 100%, Guinea Pig: 100%, Horse: 100%, Human: 100%, Mouse: 100%, Rabbit: 100%, Rat: 100%
Characteristics:	This is a rabbit polyclonal antibody against LRRC49. It was validated on Western Blot using a cell lysate as a positive control.
Purification:	Affinity Purified

Target Details

Target:	LRRC49
---------	--------

Target Details

Alternative Name:	LRRRC49 (LRRRC49 Products)
Background:	The function of this protein remains unknown. Alias Symbols: FLJ20156 Protein Interaction Partner: UBC, Protein Size: 686
Molecular Weight:	79 kDa
Gene ID:	54839
NCBI Accession:	NM_017691 , NP_060161
UniProt:	Q8IUZ0

Application Details

Application Notes:	Optimal working dilutions should be determined experimentally by the investigator.
Comment:	Antigen size: 686 AA
Restrictions:	For Research Use only

Handling

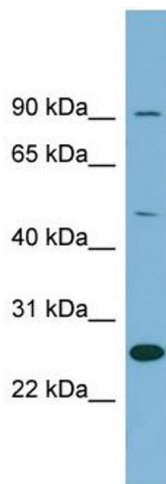
Format:	Liquid
Concentration:	Lot specific
Buffer:	Liquid. Purified antibody supplied in 1x PBS buffer with 0.09 % (w/v) sodium azide and 2 % sucrose.
Preservative:	Sodium azide
Precaution of Use:	This product contains Sodium azide: a POISONOUS AND HAZARDOUS SUBSTANCE which should be handled by trained staff only.
Handling Advice:	Avoid repeated freeze-thaw cycles.
Storage:	-20 °C
Storage Comment:	For short term use, store at 2-8°C up to 1 week. For long term storage, store at -20°C in small aliquots to prevent freeze-thaw cycles.

Publications

Product cited in: Wang, Huang, Liu: "[Nitrite content of common vegetables in Wuhu City]." in: **Ying yong sheng**

tai xue bao = The journal of applied ecology / Zhongguo sheng tai xue xue hui, Zhongguo ke xue yuan Shenyang ying yong sheng tai yan jiu suo zhu ban, Vol. 16, Issue 1, pp. 189-92, (2005) ([PubMed](#)).

Images



Western Blotting

Image 1. WB Suggested Anti-LRRC49 Antibody Titration:

0.2-1 ug/ml

ELISA Titer: 1:62500

Positive Control: HepG2 cell lysate