



[Go to Product page](#)

Datasheet for ABIN2787036  
**anti-LYAR antibody (Middle Region)**

1 Image

1 Publication

### Overview

Quantity:	100 µL
Target:	LYAR
Binding Specificity:	Middle Region
Reactivity:	Human, Mouse, Rat, Horse, Cow, Dog, Pig
Host:	Rabbit
Clonality:	Polyclonal
Conjugate:	This LYAR antibody is un-conjugated
Application:	Western Blotting (WB)

### Product Details

Immunogen:	The immunogen is a synthetic peptide directed towards the middle region of human LYAR
Sequence:	EQQGEVKKNK RERKEERQKK RKREKELKL ENHQENSRNQ KPKKRKKGQE
Predicted Reactivity:	Cow: 85%, Dog: 100%, Horse: 92%, Human: 100%, Mouse: 100%, Pig: 100%, Rat: 100%
Characteristics:	This is a rabbit polyclonal antibody against LYAR. It was validated on Western Blot using a cell lysate as a positive control.
Purification:	Affinity Purified

### Target Details

Target:	LYAR
Alternative Name:	LYAR ( <a href="#">LYAR Products</a> )

## Target Details

---

Target Type:	Antibody
Background:	<p>The function of this protein remains unknown.</p> <p>Alias Symbols: FLJ20425, ZLYAR</p> <p>Protein Interaction Partner: BEND7, SDCBP2, PRKRA, SUMO3, UBC, RNF2, ADSSL1, PHF20L1, FGF18, CD2, VCP, MDC1, ESR1, PAXIP1, GRK5, CAND1, COPS5, CUL1, CUL3, TERF2, TERF1, HDGF, EIF2AK2, OAS3, NOP56, MYBBP1A, ZBTB16, ZHX1, Rrp1b, DHX57, TSR1, DDX27, BRIX1, NAT10, GNL2, GTPBP4, TWF2, EBN</p> <p>Protein Size: 379</p>
Molecular Weight:	44 kDa
Gene ID:	55646
NCBI Accession:	<a href="#">NM_017816</a> , <a href="#">NP_060286</a>
UniProt:	<a href="#">Q9NX58</a>

## Application Details

---

Application Notes:	Optimal working dilutions should be determined experimentally by the investigator.
Comment:	Antigen size: 379 AA
Restrictions:	For Research Use only

## Handling

---

Format:	Liquid
Concentration:	Lot specific
Buffer:	Liquid. Purified antibody supplied in 1x PBS buffer with 0.09 % (w/v) sodium azide and 2 % sucrose.
Preservative:	Sodium azide
Precaution of Use:	This product contains Sodium azide: a POISONOUS AND HAZARDOUS SUBSTANCE which should be handled by trained staff only.
Handling Advice:	Avoid repeated freeze-thaw cycles.
Storage:	-20 °C
Storage Comment:	For short term use, store at 2-8°C up to 1 week. For long term storage, store at -20°C in small aliquots to prevent freeze-thaw cycles.

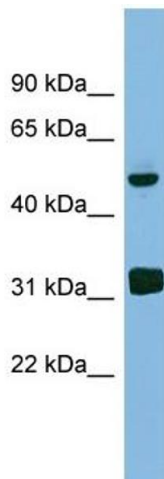
## Publications

---

Product cited in: Ewing, Chu, Elisma, Li, Taylor, Climie, McBroom-Cerajewski, Robinson, OConnor, Li, Taylor, Dharsee, Ho, Heilbut, Moore, Zhang, Ornatsky, Bukhman, Ethier, Sheng, Vasilescu, Abu-Farha, Lambert, Duewel et al.: "Large-scale mapping of human protein-protein interactions by mass spectrometry. ..." in: **Molecular systems biology**, Vol. 3, pp. 89, (2007) ([PubMed](#)).

## Images

---



### Western Blotting

**Image 1. WB Suggested Anti-LYAR Antibody Titration:** 0.2-1 ug/ml

**Positive Control:** Human heart