

Datasheet for ABIN2787037

**anti-COMMD8 antibody (Middle Region)**[Go to Product page](#)**2** Images

## Overview

Quantity:	100 µL
Target:	COMMD8
Binding Specificity:	Middle Region
Reactivity:	Human, Mouse, Cow, Dog, Rat, Guinea Pig, Horse, Rabbit, Saccharomyces cerevisiae
Host:	Rabbit
Clonality:	Polyclonal
Conjugate:	This COMMD8 antibody is un-conjugated
Application:	Western Blotting (WB)

## Product Details

Immunogen:	The immunogen is a synthetic peptide directed towards the middle region of human COMMD8
Sequence:	IAALRMPLLS LHLVDKENG E VKPYSIEMSR EELQNLIQSL EAANKVVLQL
Predicted Reactivity:	Cow: 79%, Dog: 86%, Guinea Pig: 92%, Horse: 92%, Human: 100%, Mouse: 79%, Rabbit: 86%, Rat: 86%, Yeast: 83%
Characteristics:	This is a rabbit polyclonal antibody against COMMD8. It was validated on Western Blot.
Purification:	Affinity Purified

## Target Details

Target:	COMMD8
Alternative Name:	COMMD8 ( <a href="#">COMMD8 Products</a> )

## Target Details

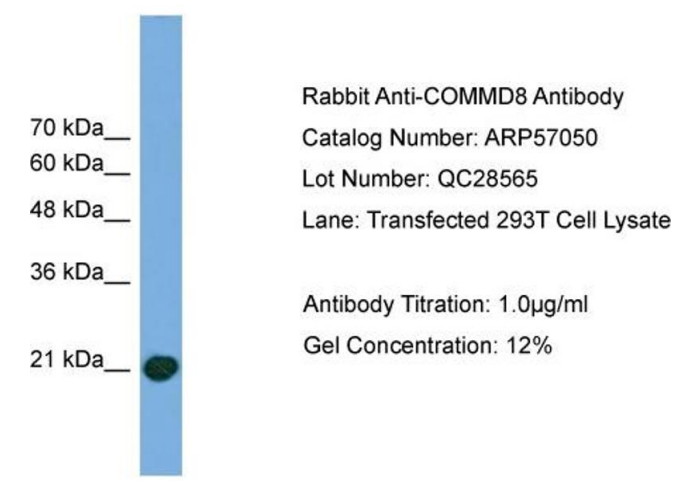
Background:	The function of COMMD8 remains unknown. Alias Symbols: FLJ20502 Protein Interaction Partner: UBC, CUL1, CUL3, COMMD7, COMMD10, COMMD3, COMMD1, RELB, RELA, NFKB1, TMX2, AKR1C1, NDUFA4L2, Protein Size: 183
Molecular Weight:	21 kDa
Gene ID:	54951
NCBI Accession:	<a href="#">NM_017845</a> , <a href="#">NP_060315</a>
UniProt:	<a href="#">Q9NX08</a>

## Application Details

Application Notes:	Optimal working dilutions should be determined experimentally by the investigator.
Comment:	Antigen size: 183 AA
Restrictions:	For Research Use only

## Handling

Format:	Liquid
Concentration:	Lot specific
Buffer:	Liquid. Purified antibody supplied in 1x PBS buffer with 0.09 % (w/v) sodium azide and 2 % sucrose.
Preservative:	Sodium azide
Precaution of Use:	This product contains Sodium azide: a POISONOUS AND HAZARDOUS SUBSTANCE which should be handled by trained staff only.
Handling Advice:	Avoid repeated freeze-thaw cycles.
Storage:	-20 °C
Storage Comment:	For short term use, store at 2-8°C up to 1 week. For long term storage, store at -20°C in small aliquots to prevent freeze-thaw cycles.

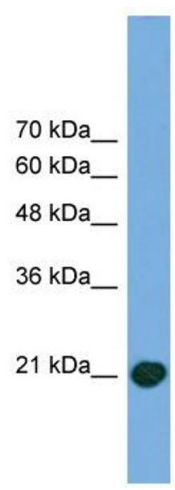


**Western Blotting**

**Image 1.** WB Suggested Anti-COMMD8

Antibody Titration: 0.2-1 µg/mL

Positive Control: Transfected 293T



**Western Blotting**

**Image 2.** WB Suggested Anti-COMMD8 Antibody Titration:

0.2-1 µg/mL

**Positive Control:** Transfected 293T