



[Go to Product page](#)

Datasheet for ABIN2787041

anti-PINX1 antibody (Middle Region)

2 Images

Overview

Quantity:	100 µL
Target:	PINX1
Binding Specificity:	Middle Region
Reactivity:	Human, Mouse, Rat, Cow, Dog, Pig, Horse, Rabbit, Guinea Pig, Zebrafish (Danio rerio)
Host:	Rabbit
Clonality:	Polyclonal
Conjugate:	This PINX1 antibody is un-conjugated
Application:	Western Blotting (WB)

Product Details

Immunogen:	The immunogen is a synthetic peptide directed towards the middle region of human PINX1
Sequence:	EKKSFSLEEK SKISKNRVHY MKFTKGDLS SRSKTDLDCI FGKRQSKKTP
Predicted Reactivity:	Cow: 100%, Dog: 100%, Guinea Pig: 92%, Horse: 100%, Human: 100%, Mouse: 100%, Pig: 100%, Rabbit: 100%, Rat: 100%, Zebrafish: 86%
Characteristics:	This is a rabbit polyclonal antibody against PINX1. It was validated on Western Blot.
Purification:	Affinity Purified

Target Details

Target:	PINX1
Alternative Name:	PINX1 (PINX1 Products)

Target Details

Background:	<p>PINX1 is a microtubule-binding protein essential for faithful chromosome segregation. PINX1 mediates TRF1 and TERT accumulation in nucleolus and enhances TRF1 binding to telomeres. PINX1 inhibits telomerase activity and may inhibit cell proliferation and act as tumor suppressor.</p> <p>Alias Symbols: FLJ20565, LPTL, LPTS, MGC8850</p> <p>Protein Interaction Partner: UBC, CACYBP, TP63, GABPA, TERF1, DHX15, AIDA, MCRS1, PAFAH1B2, TERT, MPZ, HRNR, PLEKHJ1, PABPC1, GTPBP4, PABPC4, TXN, RPS28, RPS19, RPS16, RPS10, RPS3A, RPL31, RPL23A, CAPRIN1, CALM3, AHCY,</p> <p>Protein Size: 328</p>
Molecular Weight:	37 kDa
Gene ID:	54984
NCBI Accession:	NM_017884 , NP_060354
UniProt:	Q96BK5

Application Details

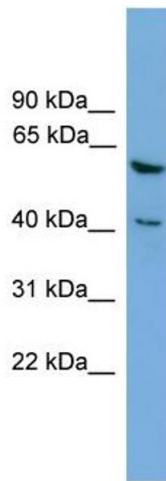
Application Notes:	Optimal working dilutions should be determined experimentally by the investigator.
Comment:	Antigen size: 328 AA
Restrictions:	For Research Use only

Handling

Format:	Liquid
Concentration:	Lot specific
Buffer:	Liquid. Purified antibody supplied in 1x PBS buffer with 0.09 % (w/v) sodium azide and 2 % sucrose.
Preservative:	Sodium azide
Precaution of Use:	This product contains Sodium azide: a POISONOUS AND HAZARDOUS SUBSTANCE which should be handled by trained staff only.
Handling Advice:	Avoid repeated freeze-thaw cycles.
Storage:	-20 °C
Storage Comment:	For short term use, store at 2-8°C up to 1 week. For long term storage, store at -20°C in small

aliquots to prevent freeze-thaw cycles.

Images



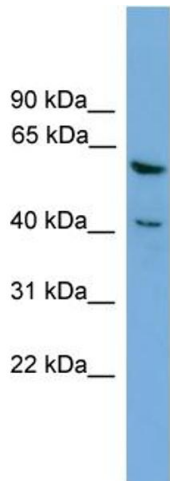
Western Blotting

Image 1. WB Suggested Anti-PINX1 Antibody Titration:

0.2-1 ug/ml

ELISA Titer: 1:312500

Positive Control: HepG2 cell lysate



Rabbit Anti-PINX1 Antibody
Catalog Number: ARP57058
Lot Number: QC29621
Lane: HepG2 Cell Lysate

Antibody Titration: 1.0µg/ml
Gel Concentration: 12%

Western Blotting

Image 2. WB Suggested Anti-PINX1

Antibody Titration: 0.2-1 µg/mL ELISA Titer: 1:12500

Positive Control: HepG2 cell lysate