

Datasheet for ABIN2787042

**anti-Tescalcin antibody (C-Term)**[Go to Product page](#)**1** Image

## Overview

Quantity:	100 µL
Target:	Tescalcin (TESC)
Binding Specificity:	C-Term
Reactivity:	Human, Mouse, Rat, Dog, Guinea Pig, Horse, Rabbit, Cow, Saccharomyces cerevisiae
Host:	Rabbit
Clonality:	Polyclonal
Conjugate:	This Tescalcin antibody is un-conjugated
Application:	Western Blotting (WB)

## Product Details

Immunogen:	The immunogen is a synthetic peptide directed towards the C-terminal region of Human TESC
Sequence:	DSDGRITLEE YRNVVEELLS GNPHIEKESA RSIADGAMME AASVCMGQME
Predicted Reactivity:	Cow: 100%, Dog: 100%, Guinea Pig: 100%, Horse: 100%, Human: 100%, Mouse: 100%, Rabbit: 100%, Rat: 100%, Yeast: 77%
Characteristics:	This is a rabbit polyclonal antibody against TESC. It was validated on Western Blot.
Purification:	Affinity Purified

## Target Details

Target:	Tescalcin (TESC)
Alternative Name:	TESC ( <a href="#">TESC Products</a> )

## Target Details

Background:	<p>TESC functions as an integral cofactor in cell pH regulation by controlling plasma membrane-type Na<sup>+</sup>/H<sup>+</sup> exchange activity. It promotes the maturation, transport, cell surface stability and exchange activity of SLC9A1/NHE1 at the plasma membrane and promotes the induction of hematopoietic stem cell differentiation toward megakaryocytic lineage. It is essential for the coupling of ERK cascade activation with the expression of ETS family genes in megakaryocytic differentiation. It is also involved in granulocytic differentiation in a ERK-dependent manner and inhibits the phosphatase activity of calcineurin.</p> <p>Alias Symbols: CHP3, TSC</p> <p>Protein Interaction Partner: WBP11, UBC, CCDC91, HMG20A, TESC, RAI1, DYNLT3, SLC9A1,</p> <p>Protein Size: 214</p>
Molecular Weight:	23 kDa
Gene ID:	54997
NCBI Accession:	<a href="#">NM_017899</a> , <a href="#">NP_060369</a>
UniProt:	<a href="#">Q96BS2</a>
Pathways:	<a href="#">Proton Transport</a>

## Application Details

Application Notes:	Optimal working dilution should be determined by the investigator.
Restrictions:	For Research Use only

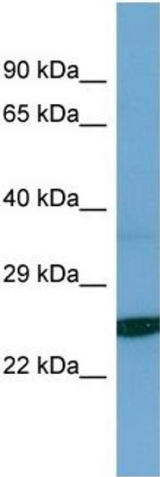
## Handling

Format:	Liquid
Concentration:	1 mg/mL
Buffer:	Liquid. Purified antibody supplied in 1x PBS buffer with 0.09 % (w/v) sodium azide and 2 % sucrose.
Preservative:	Sodium azide
Precaution of Use:	This product contains Sodium azide: a POISONOUS AND HAZARDOUS SUBSTANCE which should be handled by trained staff only.
Handling Advice:	Avoid repeat freeze-thaw cycles.
Storage:	-20 °C

Handling

Storage Comment: For short term use, store at 2-8°C up to 1 week. For long term storage, store at -20°C in small aliquots to prevent freeze-thaw cycles.

Images



Western Blotting

**Image 1.** Host: Rabbit Target Name: TESC Sample Type: Jurkat Whole Cell lysates Antibody Dilution: 1.0ug/ml TESC is supported by BioGPS gene expression data to be expressed in Jurkat