

Datasheet for ABIN2787046
anti-PEX26 antibody (N-Term)[Go to Product page](#)

1 Image

Overview

Quantity:	100 µL
Target:	PEX26
Binding Specificity:	N-Term
Reactivity:	Human, Cow, Pig, Rat, Mouse, Rabbit
Host:	Rabbit
Clonality:	Polyclonal
Conjugate:	This PEX26 antibody is un-conjugated
Application:	Western Blotting (WB)

Product Details

Immunogen:	The immunogen is a synthetic peptide directed towards the N terminal region of human PEX26
Sequence:	MKSDSSTSAA PLRGLGGPLR SSEPVRAVPA RAPAVDLL EE AADLLVVHLD
Predicted Reactivity:	Cow: 79%, Human: 100%, Mouse: 86%, Pig: 85%, Rabbit: 86%, Rat: 79%
Characteristics:	This is a rabbit polyclonal antibody against PEX26. It was validated on Western Blot using a cell lysate as a positive control.
Purification:	Affinity Purified

Target Details

Target:	PEX26
Alternative Name:	PEX26 (PEX26 Products)

Target Details

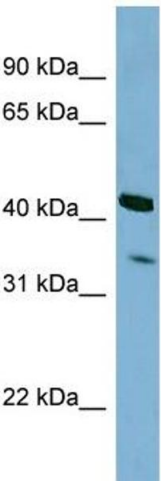
Background:	<p>This gene belongs to the peroxin-26 gene family. It is probably required for protein import into peroxisomes. It anchors PEX1 and PEX6 to peroxisome membranes, possibly to form heteromeric AAA ATPase complexes required for the import of proteins into pero</p> <p>Alias Symbols: FLJ20695, PEX26M1T, Pex26pM1T</p> <p>Protein Interaction Partner: PEX19, ELAVL1, UBC, SUFU, PEX6, PEX1,</p> <p>Protein Size: 305</p>
Molecular Weight:	34 kDa
Gene ID:	55670
NCBI Accession:	NM_017929 , NP_060399
UniProt:	Q7Z412

Application Details

Application Notes:	Optimal working dilutions should be determined experimentally by the investigator.
Comment:	Antigen size: 305 AA
Restrictions:	For Research Use only

Handling

Format:	Liquid
Concentration:	Lot specific
Buffer:	Liquid. Purified antibody supplied in 1x PBS buffer with 0.09 % (w/v) sodium azide and 2 % sucrose.
Preservative:	Sodium azide
Precaution of Use:	This product contains Sodium azide: a POISONOUS AND HAZARDOUS SUBSTANCE which should be handled by trained staff only.
Handling Advice:	Avoid repeated freeze-thaw cycles.
Storage:	-20 °C
Storage Comment:	For short term use, store at 2-8°C up to 1 week. For long term storage, store at -20°C in small aliquots to prevent freeze-thaw cycles.



Western Blotting

Image 1. WB Suggested Anti-PEX26 Antibody Titration:
0.2-1 ug/ml

ELISA Titer: 1:1562500

Positive Control: HepG2 cell lysate