

Datasheet for ABIN2787052  
**anti-WIP1 antibody (Middle Region)**

## 3 Images

[Go to Product page](#)

## Overview

Quantity:	100 µL
Target:	WIP1
Binding Specificity:	Middle Region
Reactivity:	Human, Mouse, Rat, Horse, Dog, Cow, Guinea Pig, Rabbit
Host:	Rabbit
Clonality:	Polyclonal
Conjugate:	This WIP1 antibody is un-conjugated
Application:	Western Blotting (WB)

## Product Details

Immunogen:	The immunogen is a synthetic peptide directed towards the middle region of human WIP1
Sequence:	LLGSGTTEEN KENDLRPSLP QSYAATVARP SASSASTVPG YSEDGGALRG
Predicted Reactivity:	Cow: 92%, Dog: 100%, Guinea Pig: 93%, Horse: 100%, Human: 100%, Mouse: 100%, Rabbit: 100%, Rat: 93%
Characteristics:	This is a rabbit polyclonal antibody against WIP1. It was validated on Western Blot using a cell lysate as a positive control.
Purification:	Affinity Purified

## Target Details

Target:	WIP1
---------	------

## Target Details

Alternative Name:	WIP1 ( <a href="#">WIP1 Products</a> )
Background:	<p>WD40 repeat proteins are key components of many essential biologic functions. They regulate the assembly of multiprotein complexes by presenting a beta-propeller platform for simultaneous and reversible protein-protein interactions. Members of the WIP1 su</p> <p>Alias Symbols: ATG18, FLJ10055, WIP49, ATG18A</p> <p>Protein Interaction Partner: ESR1, AR, ATG2A, HNRNPA3P1, PKP1, LGALS7, KCTD15, ESR2, PPA1,</p> <p>Protein Size: 446</p>
Molecular Weight:	49 kDa
Gene ID:	55062
NCBI Accession:	<a href="#">NM_017983</a> , <a href="#">NP_060453</a>
UniProt:	<a href="#">Q5MNZ9</a>
Pathways:	<a href="#">Nuclear Hormone Receptor Binding</a> , <a href="#">ER-Nucleus Signaling</a>

## Application Details

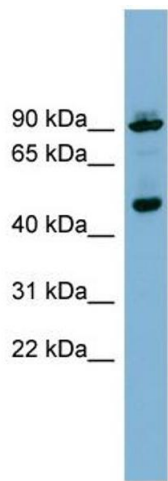
Application Notes:	Optimal working dilutions should be determined experimentally by the investigator.
Comment:	Antigen size: 446 AA
Restrictions:	For Research Use only

## Handling

Format:	Liquid
Concentration:	Lot specific
Buffer:	Liquid. Purified antibody supplied in 1x PBS buffer with 0.09 % (w/v) sodium azide and 2 % sucrose.
Preservative:	Sodium azide
Precaution of Use:	This product contains Sodium azide: a POISONOUS AND HAZARDOUS SUBSTANCE which should be handled by trained staff only.
Handling Advice:	Avoid repeated freeze-thaw cycles.
Storage:	-20 °C
Storage Comment:	For short term use, store at 2-8°C up to 1 week. For long term storage, store at -20°C in small

aliquots to prevent freeze-thaw cycles.

Images



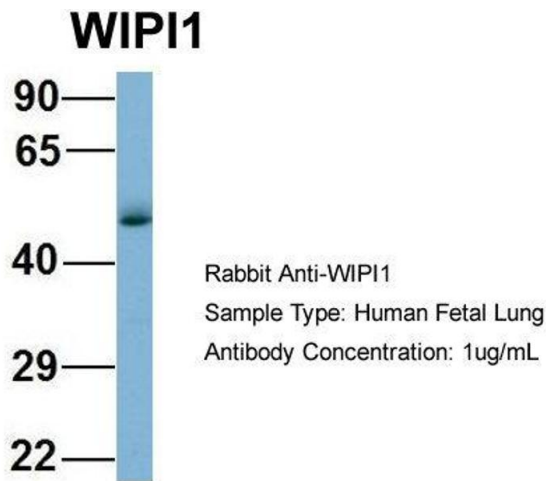
Western Blotting

**Image 1. WB Suggested Anti-WIP1 Antibody Titration:**

0.2-1 ug/ml

**ELISA Titer:** 1:312500

**Positive Control:** 293T cell lysate



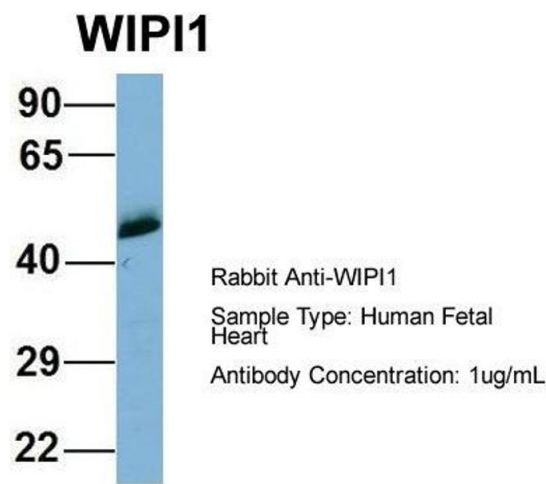
Western Blotting

**Image 2.** Host: Rabbit

Target Name: WIP1

Sample Tissue: Human Fetal Lung

Antibody Dilution: 1.0 µg/mL



Western Blotting

**Image 3.** Host: Rabbit

Target Name: WIP1

Sample Tissue: Human Fetal Heart

Antibody Dilution: 1.0 µg/mL