

Datasheet for ABIN2787053
anti-C9orf40 antibody (Middle Region)



[Go to Product page](#)

4 Images

Overview

Quantity:	100 µL
Target:	C9orf40
Binding Specificity:	Middle Region
Reactivity:	Human, Horse, Pig
Host:	Rabbit
Clonality:	Polyclonal
Conjugate:	This C9orf40 antibody is un-conjugated
Application:	Western Blotting (WB)

Product Details

Immunogen:	The immunogen is a synthetic peptide directed towards the middle region of human C9orf40
Sequence:	HNEEFWQYNT FQYWRNPLPP IDLADIEDLS EDTLTEATLQ GRNEGAEVDM
Predicted Reactivity:	Horse: 79%, Human: 100%, Pig: 79%
Characteristics:	This is a rabbit polyclonal antibody against C9orf40. It was validated on Western Blot.
Purification:	Affinity Purified

Target Details

Target:	C9orf40
Alternative Name:	C9orf40 (C9orf40 Products)
Background:	The function of C9orf40 remains unknown.

Target Details

Alias Symbols: FLJ10110, FLJ25795

Protein Interaction Partner: UBC,

Protein Size: 194

Molecular Weight: 21 kDa

Gene ID: 55071

NCBI Accession: [NM_017998](#), [NP_060468](#)

UniProt: [Q8IXQ3](#)

Application Details

Application Notes: Optimal working dilutions should be determined experimentally by the investigator.

Comment: Antigen size: 194 AA

Restrictions: For Research Use only

Handling

Format: Liquid

Concentration: Lot specific

Buffer: Liquid. Purified antibody supplied in 1x PBS buffer with 0.09 % (w/v) sodium azide and 2 % sucrose.

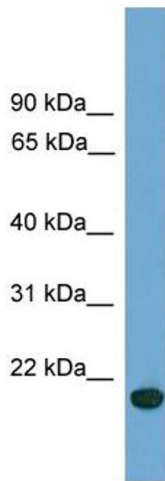
Preservative: Sodium azide

Precaution of Use: This product contains Sodium azide: a POISONOUS AND HAZARDOUS SUBSTANCE which should be handled by trained staff only.

Handling Advice: Avoid repeated freeze-thaw cycles.

Storage: -20 °C

Storage Comment: For short term use, store at 2-8°C up to 1 week. For long term storage, store at -20°C in small aliquots to prevent freeze-thaw cycles.



Western Blotting

Image 1. WB Suggested Anti-C9orf40 Antibody Titration:

0.2-1 ug/ml

ELISA Titer: 1:312500

Positive Control: Human brain



Rabbit Anti-C9orf40 Antibody
 Catalog Number: ARP57082
 Lot Number: QC29624
 Lane: Fetal Brain Lysate

Antibody Titration: 1.0µg/ml

Gel Concentration: 12%

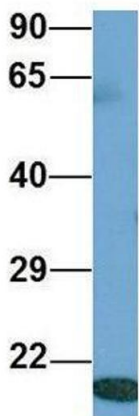
Western Blotting

Image 2. WB Suggested Anti-C9orf40

Antibody Titration: 0.2-1 µg/mL ELISA Titer: 1:12500

Positive Control: Human brain

C9orf40



Rabbit Anti-C9orf40
 Sample Type: Human Adult Placenta
 Antibody Concentration: 1ug/mL

Western Blotting

Image 3. Host: Rabbit

Target Name: C9orf40

Sample Tissue: Human Adult Placenta

Antibody Dilution: 1.0 µg/mL

Please check the [product details page](#) for more images. Overall 4 images are available for ABIN2787053.