

Datasheet for ABIN2787054  
**anti-ARGLU1 antibody (N-Term)**[Go to Product page](#)

## 1 Image

## Overview

Quantity:	100 µL
Target:	ARGLU1
Binding Specificity:	N-Term
Reactivity:	Human, Horse, Mouse, Pig, Rabbit, Rat, Cow, Dog, Zebrafish (Danio rerio)
Host:	Rabbit
Clonality:	Polyclonal
Conjugate:	This ARGLU1 antibody is un-conjugated
Application:	Western Blotting (WB)

## Product Details

Sequence:	RSKHTKSSKH NKKRSRSRSR SRDKERVKR SKSRESKRN RRESRSRSRS
Predicted Reactivity:	Cow: 100%, Dog: 100%, Horse: 100%, Human: 100%, Mouse: 100%, Pig: 100%, Rabbit: 100%, Rat: 100%, Zebrafish: 79%
Characteristics:	This is a rabbit polyclonal antibody against Arglu1. It was validated on Western Blot.
Purification:	Affinity Purified

## Target Details

Target:	ARGLU1
Alternative Name:	Arglu1 ( <a href="#">ARGLU1 Products</a> )
Background:	The function of this protein remains unknown.

## Target Details

Alias Symbols: 9430010O03Rik, C130008N12

Protein Size: 271

Molecular Weight: 33 kDa

Gene ID: 234023

NCBI Accession: [NM\\_176849](#), [NP\\_789819](#)

## Application Details

Application Notes: Optimal working dilutions should be determined experimentally by the investigator.

Comment: Antigen size: 271 AA

Restrictions: For Research Use only

## Handling

Format: Liquid

Concentration: Lot specific

Buffer: Liquid. Purified antibody supplied in 1x PBS buffer with 0.09 % (w/v) sodium azide and 2 % sucrose.

Preservative: Sodium azide

Precaution of Use: This product contains Sodium azide: a POISONOUS AND HAZARDOUS SUBSTANCE which should be handled by trained staff only.

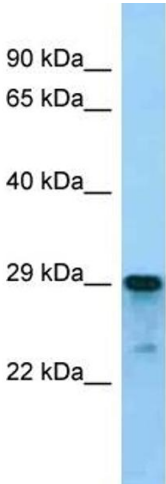
Handling Advice: Avoid repeated freeze-thaw cycles.

Storage: -20 °C

Storage Comment: For short term use, store at 2-8°C up to 1 week. For long term storage, store at -20°C in small aliquots to prevent freeze-thaw cycles.

Western Blotting

Image 1.



Rabbit Anti-Arglu1 Antibody  
Catalog Number: ARP57083  
Lot Number: QC27980  
Lane: Mouse Spleen Lysate

Antibody Titration: 1.0µg/ml  
Gel Concentration: 12%