

Datasheet for ABIN2787056
anti-RALGPS2 antibody (C-Term)[Go to Product page](#)

2 Images

Overview

Quantity:	100 µL
Target:	RALGPS2
Binding Specificity:	C-Term
Reactivity:	Human, Rabbit, Cow, Dog, Mouse, Rat, Guinea Pig, Horse, Zebrafish (Danio rerio)
Host:	Rabbit
Clonality:	Polyclonal
Conjugate:	This RALGPS2 antibody is un-conjugated
Application:	Western Blotting (WB)

Product Details

Immunogen:	The immunogen is a synthetic peptide directed towards the C terminal region of human RALGPS2
Sequence:	YLGIIYLSDLT YIDSAYPSTG SILENEQRSN LMNNILRIIS DLQQSCEYDI
Predicted Reactivity:	Cow: 100%, Dog: 100%, Guinea Pig: 93%, Horse: 100%, Human: 100%, Mouse: 100%, Rabbit: 100%, Rat: 100%, Zebrafish: 100%
Characteristics:	This is a rabbit polyclonal antibody against RALGPS2. It was validated on Western Blot using a cell lysate as a positive control.
Purification:	Affinity Purified

Target Details

Target:	RALGPS2
---------	---------

Target Details

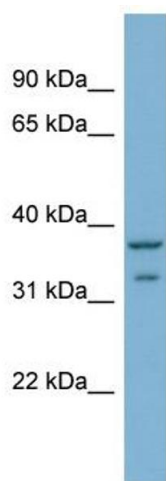
Alternative Name:	RALGPS2 (RALGPS2 Products)
Background:	<p>RALGPS2 is a guanine nucleotide exchange factor for the small GTPase RALA. RALGPS2 may be involved in cytoskeletal organization. RALGPS2 may also be involved in the stimulation of transcription in a Ras-independent fashion.</p> <p>Alias Symbols: RP4-595C2.1, FLJ10244, FLJ25604, KIAA0351, dJ595C2.1</p> <p>Protein Interaction Partner: YWHAB, UBC, YWHAZ, YWHAG, SFN,</p> <p>Protein Size: 279</p>
Molecular Weight:	32 kDa
Gene ID:	55103
NCBI Accession:	NM_152663

Application Details

Application Notes:	Optimal working dilutions should be determined experimentally by the investigator.
Comment:	Antigen size: 279 AA
Restrictions:	For Research Use only

Handling

Format:	Liquid
Concentration:	Lot specific
Buffer:	Liquid. Purified antibody supplied in 1x PBS buffer with 0.09 % (w/v) sodium azide and 2 % sucrose.
Preservative:	Sodium azide
Precaution of Use:	This product contains Sodium azide: a POISONOUS AND HAZARDOUS SUBSTANCE which should be handled by trained staff only.
Handling Advice:	Avoid repeated freeze-thaw cycles.
Storage:	-20 °C
Storage Comment:	For short term use, store at 2-8°C up to 1 week. For long term storage, store at -20°C in small aliquots to prevent freeze-thaw cycles.



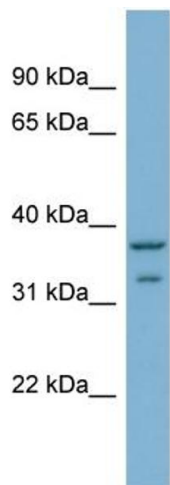
Western Blotting

Image 1. WB Suggested Anti-RALGPS2 Antibody Titration:

0.2-1 ug/ml

ELISA Titer: 1:312500

Positive Control: MCF7 cell lysate



Rabbit Anti-RALGPS2 Antibody
Catalog Number: ARP57092
Lot Number: QC27991
Lane: MCF7 Cell Lysate

Antibody Titration: 1.0µg/ml
Gel Concentration: 12%

Western Blotting

Image 2. WB Suggested Anti-RALGPS2

Antibody Titration: 0.2-1 µg/mL ELISA Titer: 1::12500

Positive Control: MCF7 cell lysate