

Datasheet for ABIN2787063
anti-CRTAC1 antibody (N-Term)



[Go to Product page](#)

1 Image

Overview

Quantity:	100 µL
Target:	CRTAC1
Binding Specificity:	N-Term
Reactivity:	Human, Mouse, Rat, Cow, Dog, Guinea Pig, Horse, Rabbit, Zebrafish (Danio rerio)
Host:	Rabbit
Clonality:	Polyclonal
Conjugate:	This CRTAC1 antibody is un-conjugated
Application:	Western Blotting (WB)

Product Details

Immunogen:	The immunogen is a synthetic peptide directed towards the N terminal region of human CRTAC1
Sequence:	FTAVTNSVLP PDYDSNPTQL NYGVAVTDVD HDGDFEIVVA GYNGPNLVLK
Predicted Reactivity:	Cow: 100%, Dog: 100%, Guinea Pig: 100%, Horse: 100%, Human: 100%, Mouse: 100%, Rabbit: 100%, Rat: 100%, Zebrafish: 77%
Characteristics:	This is a rabbit polyclonal antibody against CRTAC1. It was validated on Western Blot using a cell lysate as a positive control.
Purification:	Affinity Purified

Target Details

Target:	CRTAC1
---------	--------

Target Details

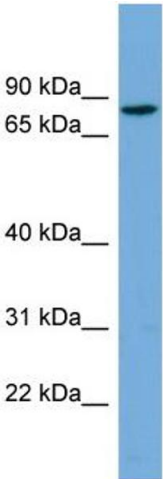
Alternative Name:	CRTAC1 (CRTAC1 Products)
Background:	The function of this protein remains unknown. Alias Symbols: ASPIC1, CEP-68, FLJ10320, ASPIC Protein Interaction Partner: MORN4, MAPRE2, AQP1, Protein Size: 661
Molecular Weight:	71 kDa
Gene ID:	55118
NCBI Accession:	NM_018058 , NP_060528
UniProt:	Q9NQ79

Application Details

Application Notes:	Optimal working dilutions should be determined experimentally by the investigator.
Comment:	Antigen size: 661 AA
Restrictions:	For Research Use only

Handling

Format:	Liquid
Concentration:	Lot specific
Buffer:	Liquid. Purified antibody supplied in 1x PBS buffer with 0.09 % (w/v) sodium azide and 2 % sucrose.
Preservative:	Sodium azide
Precaution of Use:	This product contains Sodium azide: a POISONOUS AND HAZARDOUS SUBSTANCE which should be handled by trained staff only.
Handling Advice:	Avoid repeated freeze-thaw cycles.
Storage:	-20 °C
Storage Comment:	For short term use, store at 2-8°C up to 1 week. For long term storage, store at -20°C in small aliquots to prevent freeze-thaw cycles.



Western Blotting

Image 1. WB Suggested Anti-CRTAC1 Antibody Titration:
0.2-1 ug/ml ELISA Titer: 1:1562500 Positive Control:
HepG2 cell lysate