



[Go to Product page](#)

Datasheet for ABIN2787064  
**anti-GPN2 antibody (Middle Region)**

1 Image

### Overview

Quantity:	100 µL
Target:	GPN2
Binding Specificity:	Middle Region
Reactivity:	Human, Mouse, Rabbit, Dog, Rat, Guinea Pig, Zebrafish (Danio rerio), Horse, Cow
Host:	Rabbit
Clonality:	Polyclonal
Conjugate:	This GPN2 antibody is un-conjugated
Application:	Western Blotting (WB)

### Product Details

Immunogen:	The immunogen is a synthetic peptide directed towards the middle region of human GPN2
Sequence:	VLQAVDKANG YCFRAQEQRS LEAMMSAAMG ADFHFSSTLG IQEKYLAPSN
Predicted Reactivity:	Cow: 93%, Dog: 100%, Guinea Pig: 100%, Horse: 100%, Human: 100%, Mouse: 100%, Rabbit: 100%, Rat: 100%, Zebrafish: 79%
Characteristics:	This is a rabbit polyclonal antibody against ATPBD1B. It was validated on Western Blot using a cell lysate as a positive control.
Purification:	Affinity Purified

### Target Details

Target:	GPN2
---------	------

## Target Details

---

Alternative Name: [GPN2 \(GPN2 Products\)](#)

Background: The function of this protein remains unknown.  
Alias Symbols: FLJ10349, ATPBD1B  
Protein Interaction Partner: APP,  
Protein Size: 310

Molecular Weight: 34 kDa

Gene ID: 54707

NCBI Accession: [NM\\_018066](#), [NP\\_060536](#)

UniProt: [Q9H9Y4](#)

## Application Details

---

Application Notes: Optimal working dilutions should be determined experimentally by the investigator.

Comment: Antigen size: 310 AA

Restrictions: For Research Use only

## Handling

---

Format: Liquid

Concentration: Lot specific

Buffer: Liquid. Purified antibody supplied in 1x PBS buffer with 0.09 % (w/v) sodium azide and 2 % sucrose.

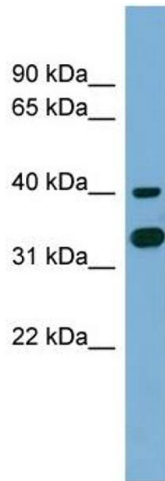
Preservative: Sodium azide

Precaution of Use: This product contains Sodium azide: a POISONOUS AND HAZARDOUS SUBSTANCE which should be handled by trained staff only.

Handling Advice: Avoid repeated freeze-thaw cycles.

Storage: -20 °C

Storage Comment: For short term use, store at 2-8°C up to 1 week. For long term storage, store at -20°C in small aliquots to prevent freeze-thaw cycles.



### Western Blotting

#### Image 1. WB Suggested Anti-GPN2 Antibody Titration:

0.2-1 ug/ml

**ELISA Titer:** 1:312500

**Positive Control:** NCI-H226 cell lysate