

Datasheet for ABIN2787066  
**anti-PIWIL2 antibody (N-Term)**



[Go to Product page](#)

1 Image

## Overview

Quantity:	100 µL
Target:	PIWIL2
Binding Specificity:	N-Term
Reactivity:	Human, Mouse, Rat, Cow, Dog, Pig, Guinea Pig, Horse, Rabbit
Host:	Rabbit
Clonality:	Polyclonal
Conjugate:	This PIWIL2 antibody is un-conjugated
Application:	Western Blotting (WB)

## Product Details

Immunogen:	The immunogen is a synthetic peptide directed towards the N terminal region of human PIWIL2
Sequence:	QVLELKSQRK TDSAEISIKI QMTKILEPCS DLCIPFYNNV FRRVMKLLDM
Predicted Reactivity:	Cow: 100%, Dog: 85%, Guinea Pig: 93%, Horse: 93%, Human: 100%, Mouse: 93%, Pig: 100%, Rabbit: 93%, Rat: 93%
Characteristics:	This is a rabbit polyclonal antibody against PIWIL2. It was validated on Western Blot using a cell lysate as a positive control.
Purification:	Affinity Purified

## Target Details

Target:	PIWIL2
---------	--------

## Target Details

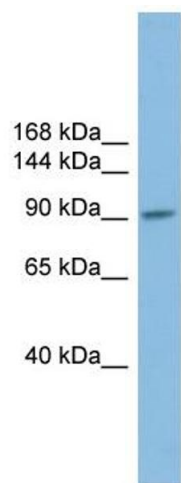
Alternative Name:	PIWIL2 ( <a href="#">PIWIL2 Products</a> )
Background:	<p>PIWIL2 belongs to the Argonaute family of proteins, which function in development and maintenance of germline stem cells (Sasaki et al., 2003 [PubMed 12906857]).</p> <p>Alias Symbols: FLJ10351, HILI, MGC133049, PIWIL1L, mili, CT80</p> <p>Protein Interaction Partner: HSP90AA1, DICER1, DDX4,</p> <p>Protein Size: 973</p>
Molecular Weight:	110 kDa
Gene ID:	55124
NCBI Accession:	<a href="#">NM_018068</a> , <a href="#">NP_060538</a>
UniProt:	<a href="#">Q8TC59</a>
Pathways:	<a href="#">Stem Cell Maintenance</a>

## Application Details

Application Notes:	Optimal working dilutions should be determined experimentally by the investigator.
Comment:	Antigen size: 973 AA
Restrictions:	For Research Use only

## Handling

Format:	Liquid
Concentration:	Lot specific
Buffer:	Liquid. Purified antibody supplied in 1x PBS buffer with 0.09 % (w/v) sodium azide and 2 % sucrose.
Preservative:	Sodium azide
Precaution of Use:	This product contains Sodium azide: a POISONOUS AND HAZARDOUS SUBSTANCE which should be handled by trained staff only.
Handling Advice:	Avoid repeated freeze-thaw cycles.
Storage:	-20 °C
Storage Comment:	For short term use, store at 2-8°C up to 1 week. For long term storage, store at -20°C in small aliquots to prevent freeze-thaw cycles.



Western Blotting

**Image 1. WB Suggested Anti-PIWIL2 Antibody Titration:**

0.2-1 ug/ml

**ELISA Titer:** 1:1562500

**Positive Control:** Human Small Intestine