

Datasheet for ABIN2787069
anti-SHQ1 antibody (N-Term)



[Go to Product page](#)

1 Image

Overview

Quantity:	100 µL
Target:	SHQ1
Binding Specificity:	N-Term
Reactivity:	Human, Mouse, Saccharomyces cerevisiae, Cow, Dog, Guinea Pig, Horse, Rabbit, Rat
Host:	Rabbit
Clonality:	Polyclonal
Conjugate:	This SHQ1 antibody is un-conjugated
Application:	Western Blotting (WB)

Product Details

Immunogen:	The immunogen is a synthetic peptide directed towards the N-terminal region of Mouse Shq1
Sequence:	PYFLRLTLPG RIVENGSEQG TYDADKGIFT IRLPKETPGQ HFEGLNMLTA
Predicted Reactivity:	Cow: 100%, Dog: 100%, Guinea Pig: 100%, Horse: 100%, Human: 100%, Mouse: 100%, Rabbit: 100%, Rat: 100%, Yeast: 83%
Characteristics:	This is a rabbit polyclonal antibody against Shq1. It was validated on Western Blot.
Purification:	Affinity Purified

Target Details

Target:	SHQ1
Alternative Name:	Shq1 (SHQ1 Products)

Target Details

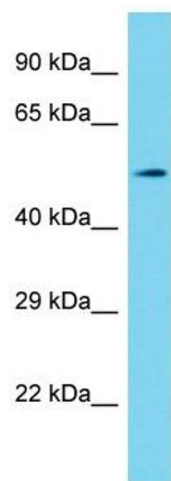
Background:	Shq1 is required for the quantitative accumulation of H/ACA ribonucleoproteins (RNPs), including telomerase, probably through the stabilization of DKC1, from the time of its synthesis until its association with NOP10, NHP2, and NAF1 at the nascent H/ACA RNA. Alias Symbols: 2810403P18Rik, Grim-1 Protein Size: 458
Molecular Weight:	50 kDa
Gene ID:	72171
NCBI Accession:	NM_181590 , NP_853621
Pathways:	Ribonucleoprotein Complex Subunit Organization

Application Details

Application Notes:	Optimal working dilutions should be determined experimentally by the investigator.
Comment:	Antigen size: 458 AA
Restrictions:	For Research Use only

Handling

Format:	Liquid
Concentration:	Lot specific
Buffer:	Liquid. Purified antibody supplied in 1x PBS buffer with 0.09 % (w/v) sodium azide and 2 % sucrose.
Preservative:	Sodium azide
Precaution of Use:	This product contains Sodium azide: a POISONOUS AND HAZARDOUS SUBSTANCE which should be handled by trained staff only.
Handling Advice:	Avoid repeated freeze-thaw cycles.
Storage:	-20 °C
Storage Comment:	For short term use, store at 2-8°C up to 1 week. For long term storage, store at -20°C in small aliquots to prevent freeze-thaw cycles.



Western Blotting
Image 1. Host: Rabbit
Target Name: Shq1
Sample Tissue: Mouse Stomach lysates
Antibody Dilution: 1.0 µg/mL