

Datasheet for ABIN2787070
anti-CENPQ antibody (N-Term)[Go to Product page](#)

4 Images

Overview

Quantity:	100 µL
Target:	CENPQ
Binding Specificity:	N-Term
Reactivity:	Human
Host:	Rabbit
Clonality:	Polyclonal
Conjugate:	This CENPQ antibody is un-conjugated
Application:	Western Blotting (WB)

Product Details

Immunogen:	The immunogen is a synthetic peptide directed towards the N terminal region of human CENPQ
Sequence:	VRNTVKKNKN HLKDLSSGQ TKHTNLKHGK TAASKRKTWQ PLSKSTRDHL
Predicted Reactivity:	Human: 100%
Characteristics:	This is a rabbit polyclonal antibody against CENPQ. It was validated on Western Blot using a cell lysate as a positive control.
Purification:	Affinity Purified

Target Details

Target:	CENPQ
Alternative Name:	CENPQ (CENPQ Products)

Target Details

Background: CENPQ is a subunit of a CENPH (MIM 605607)-CENPI (MIM 300065)-associated centromeric complex that targets CENPA (MIM 117139) to centromeres and is required for proper kinetochore function and mitotic progression (Okada et al., 2006 [PubMed 16622420]).

Alias Symbols: C6orf139, CENP-Q, FLJ10545

Protein Interaction Partner: UBC, KDM1A, C19orf57, CENPU, CENPM, CENPN, APP, CENPP, CENPO, CENPQ, PLK1,

Protein Size: 268

Molecular Weight: 30 kDa

Gene ID: 55166

NCBI Accession: [NM_018132](#), [NP_060602](#)

UniProt: [Q7L2Z9](#)

Application Details

Application Notes: Optimal working dilutions should be determined experimentally by the investigator.

Comment: Antigen size: 268 AA

Restrictions: For Research Use only

Handling

Format: Liquid

Concentration: Lot specific

Buffer: Liquid. Purified antibody supplied in 1x PBS buffer with 0.09 % (w/v) sodium azide and 2 % sucrose.

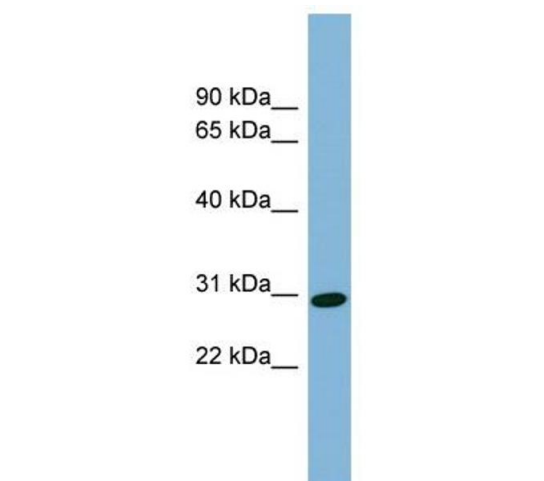
Preservative: Sodium azide

Precaution of Use: This product contains Sodium azide: a POISONOUS AND HAZARDOUS SUBSTANCE which should be handled by trained staff only.

Handling Advice: Avoid repeated freeze-thaw cycles.

Storage: -20 °C

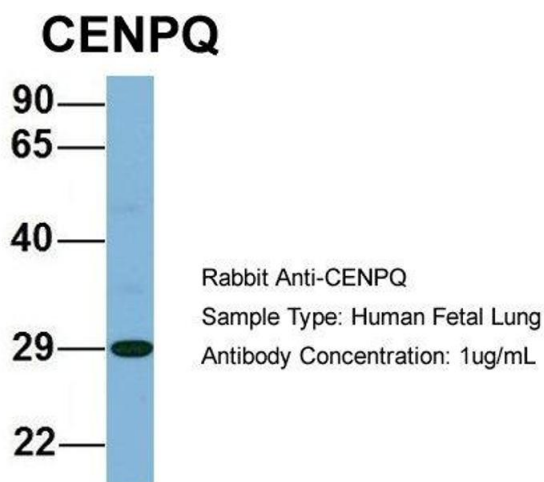
Storage Comment: For short term use, store at 2-8°C up to 1 week. For long term storage, store at -20°C in small aliquots to prevent freeze-thaw cycles.



Western Blotting

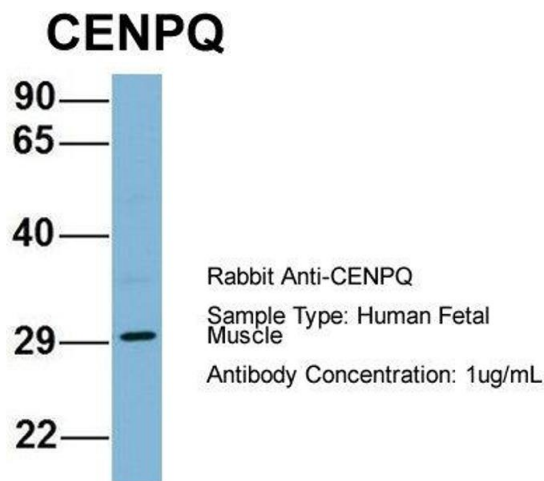
Image 1. WB Suggested Anti-CENPQ Antibody Titration:
0.2-1 ug/ml

Positive Control: Human Liver



Western Blotting

Image 2. Host: Rabbit
Target Name: CENPQ
Sample Tissue: Human Fetal Lung
Antibody Dilution: 1.0 µg/mL



Western Blotting

Image 3. Host: Rabbit
Target Name: CENPQ
Sample Tissue: Human Fetal Muscle
Antibody Dilution: 1.0 µg/mL

Please check the [product details page](#) for more images. Overall 4 images are available for ABIN2787070.