

Datasheet for ABIN2787091
anti-CCDC87 antibody (C-Term)[Go to Product page](#)

2 Images

Overview

Quantity:	100 µL
Target:	CCDC87
Binding Specificity:	C-Term
Reactivity:	Human, Horse, Pig
Host:	Rabbit
Clonality:	Polyclonal
Conjugate:	This CCDC87 antibody is un-conjugated
Application:	Western Blotting (WB)

Product Details

Immunogen:	The immunogen is a synthetic peptide directed towards the C terminal region of human CCDC87
Sequence:	ALLARLEWFE GQASNPNRFF KKTNLSSSHF LEENQVRSHL HRKLNLMESS
Predicted Reactivity:	Horse: 79%, Human: 100%, Pig: 85%
Characteristics:	This is a rabbit polyclonal antibody against CCDC87. It was validated on Western Blot.
Purification:	Affinity Purified

Target Details

Target:	CCDC87
Alternative Name:	CCDC87 (CCDC87 Products)

Target Details

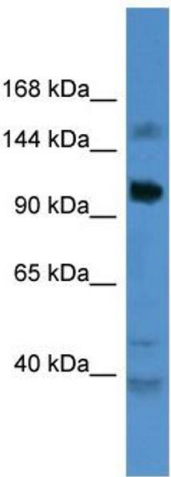
Background:	The function of this protein remains unknown. Alias Symbols: FLJ10786 Protein Interaction Partner: USHBP1, TRIM54, TRIM27, KRT15, GOLGA2, CEP250, AIRE, MEPCE, RUVBL2, RUVBL1, CDK9, CCDC155, Protein Size: 849
Molecular Weight:	96 kDa
Gene ID:	55231
NCBI Accession:	NM_018219 , NP_060689
UniProt:	Q9NVE4

Application Details

Application Notes:	Optimal working dilutions should be determined experimentally by the investigator.
Comment:	Antigen size: 849 AA
Restrictions:	For Research Use only

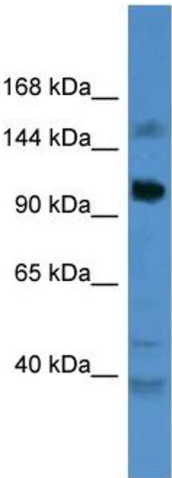
Handling

Format:	Liquid
Concentration:	Lot specific
Buffer:	Liquid. Purified antibody supplied in 1x PBS buffer with 0.09 % (w/v) sodium azide and 2 % sucrose.
Preservative:	Sodium azide
Precaution of Use:	This product contains Sodium azide: a POISONOUS AND HAZARDOUS SUBSTANCE which should be handled by trained staff only.
Handling Advice:	Avoid repeated freeze-thaw cycles.
Storage:	-20 °C
Storage Comment:	For short term use, store at 2-8°C up to 1 week. For long term storage, store at -20°C in small aliquots to prevent freeze-thaw cycles.



Western Blotting

Image 1. WB Suggested Anti-CCDC87 Antibody Titration:
0.2-1 ug/ml
ELISA Titer: 1:312500
Positive Control: PANC1 cell lysate



Rabbit Anti-CCDC87 Antibody
Catalog Number: ARP57158
Lot Number: QC28109
Lane: PANC1 Cell Lysate

Antibody Titration: 1.0µg/ml
Gel Concentration: 6-18%

Western Blotting

Image 2. WB Suggested Anti-CCDC87
Antibody Titration: 0.2-1 µg/mL ELISA Titer: 1::12500
Positive Control: PANC1 cell lysate