

Datasheet for ABIN2787094
anti-RNPEPL1 antibody (N-Term)



[Go to Product page](#)

1 Image

Overview

Quantity:	100 µL
Target:	RNPEPL1
Binding Specificity:	N-Term
Reactivity:	Human, Rat, Cow, Mouse, Pig, Dog, Guinea Pig
Host:	Rabbit
Clonality:	Polyclonal
Conjugate:	This RNPEPL1 antibody is un-conjugated
Application:	Western Blotting (WB)

Product Details

Immunogen:	The immunogen is a synthetic peptide directed towards the N terminal region of human RNPEPL1
Sequence:	LKPADIGPRS RVWAEPCLLP TATSKLSGAV EQWLSAAERL YGPYMWGRYD
Predicted Reactivity:	Cow: 100%, Dog: 93%, Guinea Pig: 93%, Human: 100%, Mouse: 100%, Pig: 100%, Rat: 100%
Characteristics:	This is a rabbit polyclonal antibody against RNPEPL1. It was validated on Western Blot using a cell lysate as a positive control.
Purification:	Affinity Purified

Target Details

Target:	RNPEPL1
---------	---------

Target Details

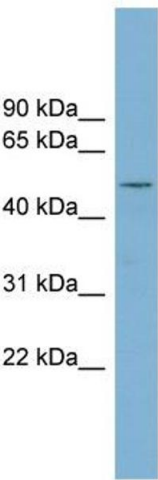
Alternative Name:	RNPEPL1 (RNPEPL1 Products)
Background:	The function of this protein remains unknown. Alias Symbols: FLJ10806, FLJ26675, MGC99544 Protein Interaction Partner: UBC, Protein Size: 494
Molecular Weight:	55 kDa
Gene ID:	57140
NCBI Accession:	NM_018226 , NP_060696
UniProt:	Q9HAU8

Application Details

Application Notes:	Optimal working dilutions should be determined experimentally by the investigator.
Comment:	Antigen size: 494 AA
Restrictions:	For Research Use only

Handling

Format:	Liquid
Concentration:	Lot specific
Buffer:	Liquid. Purified antibody supplied in 1x PBS buffer with 0.09 % (w/v) sodium azide and 2 % sucrose.
Preservative:	Sodium azide
Precaution of Use:	This product contains Sodium azide: a POISONOUS AND HAZARDOUS SUBSTANCE which should be handled by trained staff only.
Handling Advice:	Avoid repeated freeze-thaw cycles.
Storage:	-20 °C
Storage Comment:	For short term use, store at 2-8°C up to 1 week. For long term storage, store at -20°C in small aliquots to prevent freeze-thaw cycles.



Western Blotting				
Image	1.	WB	Suggested	Anti-RNPEPL1 Antibody
Titration: 0.2-1 ug/ml				
Positive Control: THP-1 cell lysate				