



[Go to Product page](#)

Datasheet for ABIN2787096
anti-CNDP2 antibody (Middle Region)

4 Images

Overview

Quantity:	100 µL
Target:	CNDP2
Binding Specificity:	Middle Region
Reactivity:	Human, Mouse, Rat, Horse, Cow, Rabbit, Dog, Guinea Pig, Zebrafish (Danio rerio), Saccharomyces cerevisiae
Host:	Rabbit
Clonality:	Polyclonal
Conjugate:	This CNDP2 antibody is un-conjugated
Application:	Western Blotting (WB)

Product Details

Immunogen:	The immunogen is a synthetic peptide directed towards the middle region of human CNDP2
Sequence:	LAGRRAMKTV FGVEPDLTRE GGSIPVTLTF QEATGKNVML LPVGSADDGA
Predicted Reactivity:	Cow: 100%, Dog: 100%, Guinea Pig: 100%, Horse: 100%, Human: 100%, Mouse: 100%, Rabbit: 100%, Rat: 100%, Yeast: 100%, Zebrafish: 100%
Characteristics:	This is a rabbit polyclonal antibody against CNDP2. It was validated on Western Blot.
Purification:	Affinity Purified

Target Details

Target:	CNDP2
---------	-------

Target Details

Alternative Name: [CNDP2 \(CNDP2 Products\)](#)

Background: CNDP2, also known as tissue carnosinase and peptidase A (EC 3.4.13.18), is a nonspecific dipeptidase rather than a selective carnosinase (Teufel et al., 2003 [PubMed 12473676]).
Alias Symbols: CN2, CPGL, FLJ10830, HsT2298, PEPA
Protein Interaction Partner: UBC, SUMO1, NEDD8, CSE1L, CKB, CASP7, CAPN1, ASS1, FTO, SMEK2, UBF1, NANS, GINS2, SCLY, NPEPPS, SLC9A3R1, RPL23, USP14, KYNU, TGM2, RPS6KA1, RPLP2, PEPD, MVD, LDHB, LDHA, GSR, PDIA3, GNS, GLA, GBP2, G6PD, ECHS1, DLD, ARPC1A, NDRG1, CNDP1, CNDP2,
Protein Size: 475

Molecular Weight: 53 kDa

Gene ID: 55748

NCBI Accession: [NM_018235](#), [NP_060705](#)

UniProt: [Q96KP4](#)

Application Details

Application Notes: Optimal working dilutions should be determined experimentally by the investigator.

Comment: Antigen size: 475 AA

Restrictions: For Research Use only

Handling

Format: Liquid

Concentration: Lot specific

Buffer: Liquid. Purified antibody supplied in 1x PBS buffer with 0.09 % (w/v) sodium azide and 2 % sucrose.

Preservative: Sodium azide

Precaution of Use: This product contains Sodium azide: a POISONOUS AND HAZARDOUS SUBSTANCE which should be handled by trained staff only.

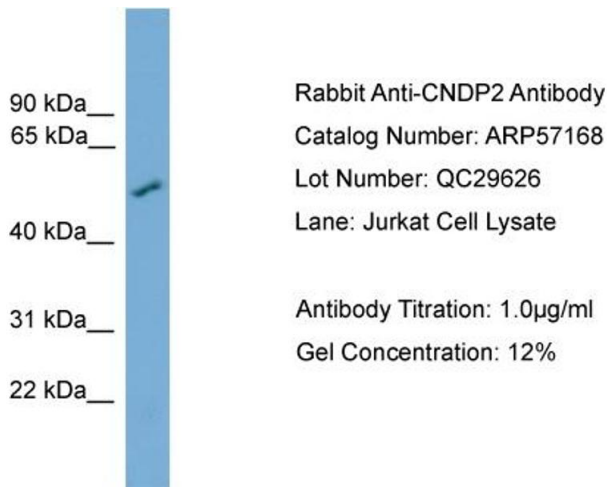
Handling Advice: Avoid repeated freeze-thaw cycles.

Storage: -20 °C

Storage Comment: For short term use, store at 2-8°C up to 1 week. For long term storage, store at -20°C in small

aliquots to prevent freeze-thaw cycles.

Validation report #103662 for Western Blotting (WB)



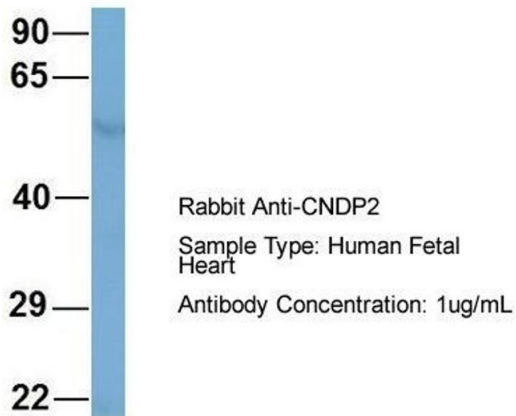
Western Blotting

Image 1. WB Suggested Anti-CNDP2

Antibody Titration: 0.2-1 µg/mL ELISA Titer: 1:1562500

Positive Control: Jurkat cell lysate

CNDP2



Western Blotting

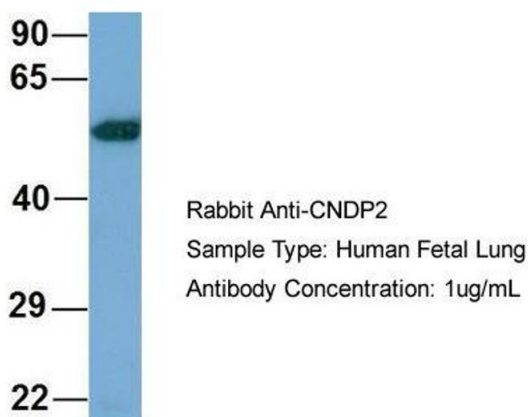
Image 2. Host: Rabbit

Target Name: CNDP2

Sample Tissue: Human Fetal Heart

Antibody Dilution: 1.0 µg/mL

CNDP2



Western Blotting

Image 3. Host: Rabbit

Target Name: CNDP2

Sample Tissue: Human Fetal Lung

Antibody Dilution: 1.0 µg/mL

Please check the [product details page](#) for more images. Overall 4 images are available for ABIN2787096.