

Datasheet for ABIN2787099

anti-Septin 11 antibody (N-Term)

4 Images

[Go to Product page](#)

Overview

Quantity:	100 µL
Target:	Septin 11 (SEPT11)
Binding Specificity:	N-Term
Reactivity:	Human, Mouse, Rat, Horse, Rabbit, Cow, Guinea Pig
Host:	Rabbit
Clonality:	Polyclonal
Conjugate:	This Septin 11 antibody is un-conjugated
Application:	Western Blotting (WB), Immunohistochemistry (IHC)

Product Details

Immunogen:	The immunogen is a synthetic peptide directed towards the N terminal region of human SEPT11(septin 11)
Sequence:	MAVAVGRPSN EELRNLSLSG HVGFDLPDQ LVNKSTSQGF CFNILCVGET
Predicted Reactivity:	Cow: 100%, Guinea Pig: 100%, Horse: 100%, Human: 100%, Mouse: 100%, Rabbit: 100%, Rat: 100%
Characteristics:	This is a rabbit polyclonal antibody against SEPT11. It was validated on Western Blot using a cell lysate as a positive control.
Purification:	Affinity Purified

Target Details

Target:	Septin 11 (SEPT11)
---------	--------------------

Target Details

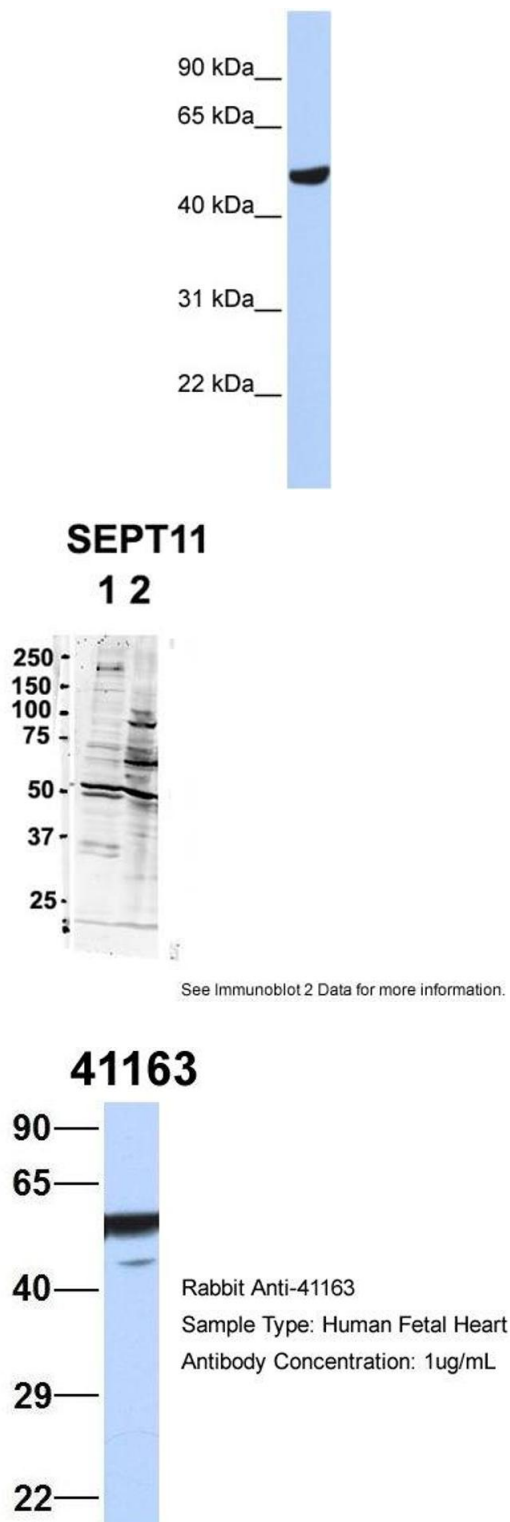
Alternative Name:	SEPT11(septin 11) (SEPT11 Products)
Background:	<p>SEPT11 belongs to the conserved septin family of filament-forming cytoskeletal GTPases that are involved in a variety of cellular functions including cytokinesis and vesicle trafficking.</p> <p>Protein Interaction Partner: UBC, SEPT5, SEC23IP, SEPT2, CFTR, VCAM1, TMEM189, TMEM9, TMEM177, NABP2, SIN3A, FERMT2, SEPT9, TOMM40, MAD2L1BP, SEC22B, SLC9A3R2, SUCLG1, SF1, XRCC1, VDAC2, TST, TCOF1, STIM1, FSCN1, SMARCA2, OXCT1, NDUFS6, MPST, SEPT7, SH3KBP1, ELAVL1,</p> <p>Protein Size: 429</p>
Molecular Weight:	49 kDa
Gene ID:	55752
NCBI Accession:	NM_018243 , NP_060713
UniProt:	Q9NVA2

Application Details

Application Notes:	Optimal working dilutions should be determined experimentally by the investigator.
Comment:	Antigen size: 429 AA
Restrictions:	For Research Use only

Handling

Format:	Liquid
Concentration:	Lot specific
Buffer:	Liquid. Purified antibody supplied in 1x PBS buffer with 0.09 % (w/v) sodium azide and 2 % sucrose.
Preservative:	Sodium azide
Precaution of Use:	This product contains Sodium azide: a POISONOUS AND HAZARDOUS SUBSTANCE which should be handled by trained staff only.
Handling Advice:	Avoid repeated freeze-thaw cycles.
Storage:	-20 °C
Storage Comment:	For short term use, store at 2-8°C up to 1 week. For long term storage, store at -20°C in small aliquots to prevent freeze-thaw cycles.



Western Blotting

Image 1. WB Suggested Anti-SEPT11(septin 11) Antibody

Titration: 0.2-1 ug/ml

ELISA Titer: 1:1562500

Positive Control: MCF7 cell lysate

Western Blotting

Image 2. Sample Type: 1. Human NT-2 cells (60ug)

2. mouse brain extracts (80ug)

Primary Antibody Dilution: 2ug/ml

Secondary Antibody: IRDye 800CW goat anti-rabbit from Li-COR Bioscience

Secondary Antibody Dilution: 1: 20,000

Image Submitted by: Yuzhi Chen

University of Arkansas for Medical Science

Western Blotting

Image 3. Host: Rabbit

Target Name: 41163

Sample Tissue: Human Fetal Heart

Antibody Dilution: 1.0 µg/mL

Please check the [product details page](#) for more images. Overall 4 images are available for ABIN2787099.