



[Go to Product page](#)

Datasheet for ABIN2787102  
**anti-ELP2 antibody (Middle Region)**

1 Image

Overview

Quantity:	100 µL
Target:	ELP2
Binding Specificity:	Middle Region
Reactivity:	Human, Rat, Mouse, Dog, Guinea Pig, Horse, Rabbit, Cow, Zebrafish (Danio rerio)
Host:	Rabbit
Clonality:	Polyclonal
Conjugate:	This ELP2 antibody is un-conjugated
Application:	Western Blotting (WB)

Product Details

Immunogen:	The immunogen is a synthetic peptide directed towards the middle region of human ELP2
Sequence:	EESGVWLEQV RVGEVGGNTL GFYDCQFNED GSMIIAHAFH GALHLWKQNT
Predicted Reactivity:	Cow: 100%, Dog: 100%, Guinea Pig: 100%, Horse: 100%, Human: 100%, Mouse: 100%, Rabbit: 100%, Rat: 100%, Zebrafish: 92%
Characteristics:	This is a rabbit polyclonal antibody against ELP2. It was validated on Western Blot using a cell lysate as a positive control.
Purification:	Affinity Purified

Target Details

Target:	ELP2
---------	------

## Target Details

---

Alternative Name: [ELP2 \(ELP2 Products\)](#)

Background: ELP2 regulates the ligand-dependent activation of STAT3. ELP2 acts as subunit of the RNA polymerase II elongator complex, which is a histone acetyltransferase component of the RNA polymerase II (Pol II) holoenzyme and is involved in transcriptional elongation. Elongator may play a role in chromatin remodeling and is involved in acetylation of histones H3 and probably H4.

Alias Symbols: FLJ10879, SHINC-2, STATIP1, StIP

Protein Interaction Partner: UBC, FAM96B, CIAO1, PAAF1, WRNIP1, ELP3, NRBP1, CD2AP, KIAA1033, USP34, SNRPB2, PRPSAP2, KIF5B, MMS19, IKBKAP, ELP4, CTDP1, STAT5B, STAT1, JAK2, JAK1, STAT3, TYK2,

Protein Size: 826

Molecular Weight: 92 kDa

Gene ID: 55250

NCBI Accession: [NM\\_018255](#), [NP\\_060725](#)

UniProt: [Q6IA86](#)

Pathways: [Stem Cell Maintenance](#), [Positive Regulation of Endopeptidase Activity](#), [Protein targeting to Nucleus](#)

## Application Details

---

Application Notes: Optimal working dilutions should be determined experimentally by the investigator.

Comment: Antigen size: 826 AA

Restrictions: For Research Use only

## Handling

---

Format: Liquid

Concentration: Lot specific

Buffer: Liquid. Purified antibody supplied in 1x PBS buffer with 0.09 % (w/v) sodium azide and 2 % sucrose.

Preservative: Sodium azide

Precaution of Use: This product contains Sodium azide: a POISONOUS AND HAZARDOUS SUBSTANCE which should be handled by trained staff only.

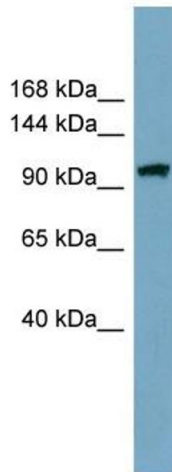
## Handling

Handling Advice: Avoid repeated freeze-thaw cycles.

Storage: -20 °C

Storage Comment: For short term use, store at 2-8°C up to 1 week. For long term storage, store at -20°C in small aliquots to prevent freeze-thaw cycles.

## Images



### Western Blotting

**Image 1. WB Suggested Anti-ELP2 Antibody Titration: 0.2-1 ug/ml**

**Positive Control:** THP-1 cell lysate