

Datasheet for ABIN2787110
anti-UEVLD antibody (Middle Region)[Go to Product page](#)

2 Images

Overview

Quantity:	100 µL
Target:	UEVLD
Binding Specificity:	Middle Region
Reactivity:	Human, Rat, Mouse, Dog, Rabbit, Cow, Horse, Guinea Pig, Pig
Host:	Rabbit
Clonality:	Polyclonal
Conjugate:	This UEVLD antibody is un-conjugated
Application:	Western Blotting (WB)

Product Details

Immunogen:	The immunogen is a synthetic peptide directed towards the middle region of human UEVLD
Sequence:	SLSSSDEARQ VDLLAYIAKI TEGVSDTNSK SWANHENKTV NKITVGGGE
Predicted Reactivity:	Cow: 92%, Dog: 85%, Guinea Pig: 86%, Horse: 92%, Human: 100%, Mouse: 91%, Pig: 92%, Rabbit: 93%, Rat: 93%
Characteristics:	This is a rabbit polyclonal antibody against UEVLD. It was validated on Western Blot using a cell lysate as a positive control.
Purification:	Affinity Purified

Target Details

Target:	UEVLD
---------	-------

Target Details

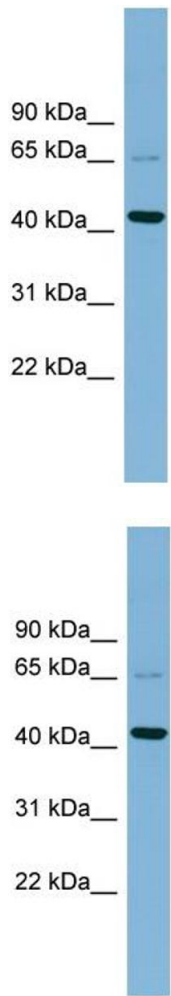
Alternative Name:	UEVLD (UEVLD Products)
Background:	UEVLD is a possible negative regulator of polyubiquitination. Alias Symbols: ATTP, FLJ11068, UEV3 Protein Interaction Partner: UBC, DTX3, LRSAM1, RNF114, TRAF6, RNF4, Protein Size: 379
Molecular Weight:	42 kDa
Gene ID:	55293
NCBI Accession:	NM_018314 , NP_060784
UniProt:	A8MYV4

Application Details

Application Notes:	Optimal working dilutions should be determined experimentally by the investigator.
Comment:	Antigen size: 379 AA
Restrictions:	For Research Use only

Handling

Format:	Liquid
Concentration:	Lot specific
Buffer:	Liquid. Purified antibody supplied in 1x PBS buffer with 0.09 % (w/v) sodium azide and 2 % sucrose.
Preservative:	Sodium azide
Precaution of Use:	This product contains Sodium azide: a POISONOUS AND HAZARDOUS SUBSTANCE which should be handled by trained staff only.
Handling Advice:	Avoid repeated freeze-thaw cycles.
Storage:	-20 °C
Storage Comment:	For short term use, store at 2-8°C up to 1 week. For long term storage, store at -20°C in small aliquots to prevent freeze-thaw cycles.



Western Blotting

Image 1. WB Suggested Anti-UEVLD Antibody Titration:
0.2-1 ug/ml
ELISA Titer: 1:62500
Positive Control: 721_B cell lysate

Western Blotting

Image 2. WB Suggested Anti-UEVLD
Antibody Titration: 0.2-1 µg/mL ELISA Titer: 1::2500
Positive Control: 21_B cell lysate
UEVLD is supported by BioGPS gene expression data to be expressed in 721_B