

Datasheet for ABIN2787140  
**anti-ARHGAP15 antibody (Middle Region)**[Go to Product page](#)

## 1 Image

## Overview

Quantity:	100 µL
Target:	ARHGAP15
Binding Specificity:	Middle Region
Reactivity:	Human, Mouse, Rat, Cow, Guinea Pig, Horse, Rabbit, Dog, Zebrafish (Danio rerio)
Host:	Rabbit
Clonality:	Polyclonal
Conjugate:	This ARHGAP15 antibody is un-conjugated
Application:	Western Blotting (WB)

## Product Details

Immunogen:	The immunogen is a synthetic peptide directed towards the middle region of human ARHGAP15
Sequence:	VKSRLKKFIT RRPSLKTLE KGLIKDQIFG SHLHKVCERE NSTVPWFVKQ
Predicted Reactivity:	Cow: 100%, Dog: 100%, Guinea Pig: 100%, Horse: 100%, Human: 100%, Mouse: 100%, Rabbit: 100%, Rat: 100%, Zebrafish: 92%
Characteristics:	This is a rabbit polyclonal antibody against ARHGAP15. It was validated on Western Blot using a cell lysate as a positive control.
Purification:	Affinity Purified

## Target Details

Target:	ARHGAP15
---------	----------

## Target Details

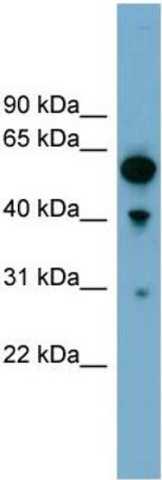
Alternative Name:	ARHGAP15 ( <a href="#">ARHGAP15 Products</a> )
Background:	<p>RHO GTPases (see ARHA, MIM 165390) regulate diverse biologic processes, and their activity is regulated by RHO GTPase-activating proteins (GAPs), such as ARHGAP15 (Seoh et al., 2003 [PubMed 12650940]).</p> <p>Alias Symbols: BM046</p> <p>Protein Interaction Partner: UBC, KDM1A, CD93, PRNP, SNCA, SMURF1, RAC1, TGFBR1,</p> <p>Protein Size: 475</p>
Molecular Weight:	54 kDa
Gene ID:	55843
NCBI Accession:	<a href="#">NM_018460</a> , <a href="#">NP_060930</a>
UniProt:	<a href="#">Q53QZ3</a>

## Application Details

Application Notes:	Optimal working dilutions should be determined experimentally by the investigator.
Comment:	Antigen size: 475 AA
Restrictions:	For Research Use only

## Handling

Format:	Liquid
Concentration:	Lot specific
Buffer:	Liquid. Purified antibody supplied in 1x PBS buffer with 0.09 % (w/v) sodium azide and 2 % sucrose.
Preservative:	Sodium azide
Precaution of Use:	This product contains Sodium azide: a POISONOUS AND HAZARDOUS SUBSTANCE which should be handled by trained staff only.
Handling Advice:	Avoid repeated freeze-thaw cycles.
Storage:	-20 °C
Storage Comment:	For short term use, store at 2-8°C up to 1 week. For long term storage, store at -20°C in small aliquots to prevent freeze-thaw cycles.



**Western Blotting**

**Image 1. WB Suggested Anti-ARHGAP15 Antibody**

**Titration:** 0.2-1 ug/ml

**Positive Control:** 293T cell lysate