

Datasheet for ABIN2787144
anti-PIDD antibody (Middle Region)[Go to Product page](#)

2 Images

Overview

Quantity:	100 µL
Target:	PIDD
Binding Specificity:	Middle Region
Reactivity:	Human, Rat, Mouse, Guinea Pig, Cow, Dog
Host:	Rabbit
Clonality:	Polyclonal
Conjugate:	This PIDD antibody is un-conjugated
Application:	Western Blotting (WB)

Product Details

Immunogen:	The immunogen is a synthetic peptide directed towards the middle region of human LRDD
Sequence:	RRDPEQVLLQ CLPRNKVDAT LRLLERYRG PEPSTVEMF EGEEFFAAFE
Predicted Reactivity:	Cow: 93%, Dog: 93%, Guinea Pig: 100%, Human: 100%, Mouse: 86%, Rat: 100%
Characteristics:	This is a rabbit polyclonal antibody against LRDD. It was validated on Western Blot.
Purification:	Affinity Purified

Target Details

Target:	PIDD
Alternative Name:	LRDD (PIDD Products)
Background:	The protein encoded by this gene contains a leucine-rich repeat and a death domain. This

Target Details

protein has been shown to interact with other death domain proteins, such as Fas (TNFRSF6)-associated via death domain (FADD) and MAP-kinase activating death domain-containing protein (MADD), and thus may function as an adaptor protein in cell death-related signaling processes. The expression of the mouse counterpart of this gene has been found to be positively regulated by the tumor suppressor p53 and to induce cell apoptosis in response to DNA damage, which suggests a role for this gene as an effector of p53-dependent apoptosis. Three alternatively spliced transcript variants encoding distinct isoforms have been reported.

Alias Symbols: DKFZp434D229, MGC16925, PIDD, LRDD

Protein Interaction Partner: CRADD, CRYAB, MDFI, SOX8, KEAP1, TEAD3, MAFG, AFP, RPAP3, FANCI, SENP3, TRIM32, ANP32B, HAX1, TELO2, NUP93, AIFM1, RFC5, RFC4, PRKDC, PPP6C, POLR2B, POLD1, PCNA, PRDX1, MCM7, ERCC5, ERCC2, DDB1, CASP2, FADD, RIPK1, IKBKG, CCDC85B, EFEMP2, MADD,

Protein Size: 753

Molecular Weight: 83 kDa

Gene ID: 55367

NCBI Accession: [NM_018494](#), [NP_060964](#)

Pathways: [p53 Signaling](#), [Caspase Cascade in Apoptosis](#), [Positive Regulation of Endopeptidase Activity](#)

Application Details

Application Notes: Optimal working dilutions should be determined experimentally by the investigator.

Comment: Antigen size: 753 AA

Restrictions: For Research Use only

Handling

Format: Liquid

Concentration: Lot specific

Buffer: Liquid. Purified antibody supplied in 1x PBS buffer with 0.09 % (w/v) sodium azide and 2 % sucrose.

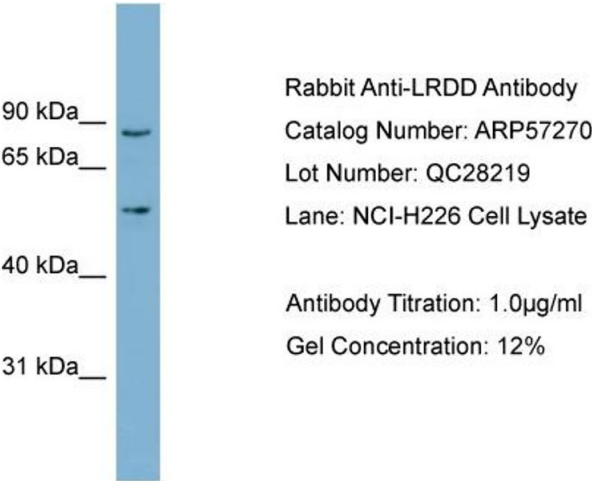
Preservative: Sodium azide

Precaution of Use: This product contains Sodium azide: a POISONOUS AND HAZARDOUS SUBSTANCE which should be handled by trained staff only.

Handling

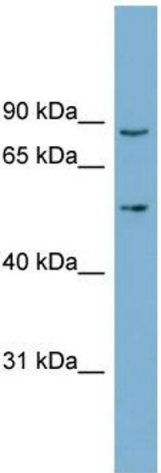
Handling Advice:	Avoid repeated freeze-thaw cycles.
Storage:	-20 °C
Storage Comment:	For short term use, store at 2-8°C up to 1 week. For long term storage, store at -20°C in small aliquots to prevent freeze-thaw cycles.

Images



Western Blotting

Image 1. WB Suggested Anti-LRDD
Antibody Titration: 0.2-1 µg/mL ELISA Titer: 1:12500
Positive Control: NCI-H226 cell lysate



Western Blotting

Image 2. WB Suggested Anti-LRDD Antibody Titration: 0.2-1 µg/ml
ELISA Titer: 1:312500
Positive Control: NCI-H226 cell lysate