



[Go to Product page](#)

Datasheet for ABIN2787146

anti-GPALPP1 antibody (Middle Region)

1 Image

Overview

Quantity:	100 µL
Target:	GPALPP1
Binding Specificity:	Middle Region
Reactivity:	Human, Mouse, Rabbit, Rat, Dog, Horse, Guinea Pig, Zebrafish (Danio rerio)
Host:	Rabbit
Clonality:	Polyclonal
Conjugate:	This GPALPP1 antibody is un-conjugated
Application:	Western Blotting (WB)

Product Details

Immunogen:	The immunogen is a synthetic peptide directed towards the middle region of human KIAA1704
Sequence:	KAAEDKNKPQ ERIPFDRDKD LKVNRFDEAQ KKALIKKSRE LNTRFSHGKG
Predicted Reactivity:	Dog: 100%, Guinea Pig: 100%, Horse: 100%, Human: 100%, Mouse: 100%, Rabbit: 100%, Rat: 100%, Zebrafish: 86%
Characteristics:	This is a rabbit polyclonal antibody against KIAA1704. It was validated on Western Blot using a cell lysate as a positive control.
Purification:	Affinity Purified

Target Details

Target:	GPALPP1
---------	---------

Target Details

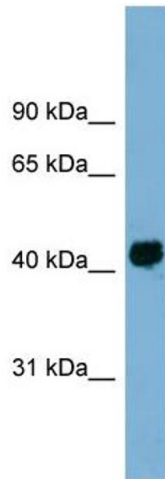
Alternative Name:	KIAA1704 (GPALPP1 Products)
Background:	The function of this protein remains unknown. Alias Symbols: AD029, LSR7, RP11-245H20.2, bA245H20.2, KIAA1704 Protein Interaction Partner: PPID, UBC, HECW2, Protein Size: 340
Molecular Weight:	38 kDa
Gene ID:	55425
NCBI Accession:	NM_018559 , NP_061029
UniProt:	Q8IXQ4

Application Details

Application Notes:	Optimal working dilutions should be determined experimentally by the investigator.
Comment:	Antigen size: 340 AA
Restrictions:	For Research Use only

Handling

Format:	Liquid
Concentration:	Lot specific
Buffer:	Liquid. Purified antibody supplied in 1x PBS buffer with 0.09 % (w/v) sodium azide and 2 % sucrose.
Preservative:	Sodium azide
Precaution of Use:	This product contains Sodium azide: a POISONOUS AND HAZARDOUS SUBSTANCE which should be handled by trained staff only.
Handling Advice:	Avoid repeated freeze-thaw cycles.
Storage:	-20 °C
Storage Comment:	For short term use, store at 2-8°C up to 1 week. For long term storage, store at -20°C in small aliquots to prevent freeze-thaw cycles.



Western Blotting

Image 1. WB Suggested Anti-KIAA1704 Antibody

Titration: 0.2-1 ug/ml

Positive Control: Human Spleen