



[Go to Product page](#)

Datasheet for ABIN2787160  
**anti-TUBA8 antibody (N-Term)**

2 Images

Overview

Quantity:	100 µL
Target:	TUBA8
Binding Specificity:	N-Term
Reactivity:	Human, Rat, Mouse, Dog, Rabbit, Guinea Pig, Horse, Zebrafish (Danio rerio)
Host:	Rabbit
Clonality:	Polyclonal
Conjugate:	This TUBA8 antibody is un-conjugated
Application:	Western Blotting (WB)

Product Details

Immunogen:	The immunogen is a synthetic peptide directed towards the N terminal region of human TUBA8
Sequence:	EPTVVDEVRA GTYRQLFHPE QLITGKEDAA NNYARGHYTV GKESIDLVLVD
Predicted Reactivity:	Dog: 100%, Guinea Pig: 100%, Horse: 100%, Human: 100%, Mouse: 100%, Rabbit: 100%, Rat: 100%, Zebrafish: 93%
Characteristics:	This is a rabbit polyclonal antibody against TUBA8. It was validated on Western Blot.
Purification:	Affinity Purified

Target Details

Target:	TUBA8
Alternative Name:	TUBA8 ( <a href="#">TUBA8 Products</a> )

## Target Details

---

Background:	<p>This gene encodes a member of the alpha tubulin protein family. Alpha tubulins are one of two core protein families (alpha and beta tubulins) that heterodimerize and assemble to form microtubules. Mutations in this gene are associated with polymicrogyria and optic nerve hypoplasia. Alternate splicing results in multiple transcript variants.</p> <p>Alias Symbols: TUBAL2</p> <p>Protein Interaction Partner: TP53, UBC, LGR4, rev, IGSF8, HDAC6, CD81, UBL4A, SHC1, ARRB2, PPP2CA, MEPCE, GRM7, PXN, SIAH1, MYC, TCP1,</p> <p>Protein Size: 449</p>
Molecular Weight:	50 kDa
Gene ID:	51807
NCBI Accession:	<a href="#">NM_018943</a> , <a href="#">NP_061816</a>
UniProt:	<a href="#">Q9NY65</a>
Pathways:	<a href="#">Microtubule Dynamics</a>

## Application Details

---

Application Notes:	Optimal working dilutions should be determined experimentally by the investigator.
Comment:	Antigen size: 449 AA
Restrictions:	For Research Use only

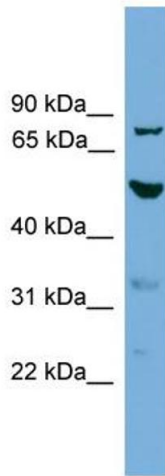
## Handling

---

Format:	Liquid
Concentration:	Lot specific
Buffer:	Liquid. Purified antibody supplied in 1x PBS buffer with 0.09 % (w/v) sodium azide and 2 % sucrose.
Preservative:	Sodium azide
Precaution of Use:	This product contains Sodium azide: a POISONOUS AND HAZARDOUS SUBSTANCE which should be handled by trained staff only.
Handling Advice:	Avoid repeated freeze-thaw cycles.
Storage:	-20 °C
Storage Comment:	For short term use, store at 2-8°C up to 1 week. For long term storage, store at -20°C in small

aliquots to prevent freeze-thaw cycles.

Images



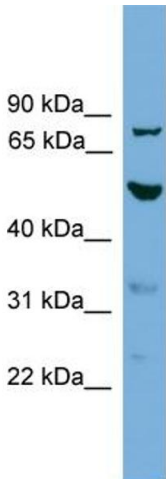
Western Blotting

**Image 1. WB Suggested Anti-TUBA8 Antibody Titration:**

0.2-1 ug/ml

**ELISA Titer:** 1:1562500

**Positive Control:** 293T cell lysate



Rabbit Anti-TUBA8 Antibody  
Catalog Number: ARP57298  
Lot Number: QC29635  
Lane: 293T Cell Lysate

Antibody Titration: 1.0µg/ml  
Gel Concentration: 12%

Western Blotting

**Image 2. WB Suggested Anti-TUBA8**

Antibody Titration: 0.2-1 µg/mL ELISA Titer: 1:1562500

Positive Control: 93T cell lysate