

Datasheet for ABIN2787162

**anti-Syntrophin gamma 1 antibody (Middle Region)**[Go to Product page](#)**1** Image

## Overview

Quantity:	100 µL
Target:	Syntrophin gamma 1 (SNTG1)
Binding Specificity:	Middle Region
Reactivity:	Human, Mouse, Dog, Horse, Cow, Rabbit, Rat, Zebrafish (Danio rerio)
Host:	Rabbit
Clonality:	Polyclonal
Conjugate:	This Syntrophin gamma 1 antibody is un-conjugated
Application:	Western Blotting (WB)

## Product Details

Immunogen:	The immunogen is a synthetic peptide directed towards the middle region of human SNTG1
Sequence:	RFSQYVPGTD LSRQNAFQVI AVDGVCTGII QCLSAEDCVD WLQAIATNIS
Predicted Reactivity:	Cow: 93%, Dog: 100%, Horse: 100%, Human: 100%, Mouse: 100%, Rabbit: 93%, Rat: 100%, Zebrafish: 86%
Characteristics:	This is a rabbit polyclonal antibody against SNTG1. It was validated on Western Blot using a cell lysate as a positive control.
Purification:	Affinity Purified

## Target Details

Target:	Syntrophin gamma 1 (SNTG1)
---------	----------------------------

## Target Details

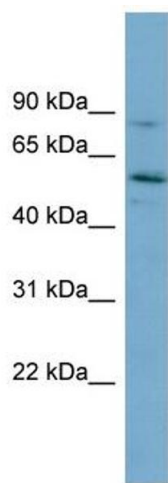
Alternative Name:	SNTG1 ( <a href="#">SNTG1 Products</a> )
Background:	<p>The protein encoded by this gene is a member of the syntrophin family. Syntrophins are cytoplasmic peripheral membrane proteins that typically contain 2 pleckstrin homology (PH) domains, a PDZ domain that bisects the first PH domain, and a C-terminal domain.</p> <p>Alias Symbols: G1SYN, SYN4</p> <p>Protein Interaction Partner: UBC, DTNB, DGKZ, DTNA, DMD, TGFBR1, KCNA4, ADRA1D, VPS45, SNAP23, STXBP3,</p> <p>Protein Size: 517</p>
Molecular Weight:	58 kDa
Gene ID:	54212
NCBI Accession:	<a href="#">NM_018967</a> , <a href="#">NP_061840</a>
UniProt:	<a href="#">Q9NSN8</a>

## Application Details

Application Notes:	Optimal working dilutions should be determined experimentally by the investigator.
Comment:	Antigen size: 517 AA
Restrictions:	For Research Use only

## Handling

Format:	Liquid
Concentration:	Lot specific
Buffer:	Liquid. Purified antibody supplied in 1x PBS buffer with 0.09 % (w/v) sodium azide and 2 % sucrose.
Preservative:	Sodium azide
Precaution of Use:	This product contains Sodium azide: a POISONOUS AND HAZARDOUS SUBSTANCE which should be handled by trained staff only.
Handling Advice:	Avoid repeated freeze-thaw cycles.
Storage:	-20 °C
Storage Comment:	For short term use, store at 2-8°C up to 1 week. For long term storage, store at -20°C in small aliquots to prevent freeze-thaw cycles.



Western Blotting

**Image 1. WB Suggested Anti-SNTG1 Antibody Titration:**

0.2-1 ug/ml

**ELISA Titer:** 1:12500

**Positive Control:** HepG2 cell lysate